

Recombinant Human MYL2 Protein (Ala2-Ile159), N-His tagged

Cat. No. MYL2-4647H Lot. No. (See product label)

SPECIFICATION

Product Overview	Recombinant human MYL2 (Ala2-Ile159) fused with the N-His tag was expressed in E. coli.
Species	Human
Source	E.coli
ProteinLength	Ala2-Ile159
Form	Lyophilized powder/frozen liquid
Molecular Mass	20.17 kDa
Purity	>90% as determined by SDS-PAGE.
Notes	For research use only.
Storage	Use a manual defrost freezer and avoid repeated freeze thaw cycles. Store at 2 to 8 centigrade for one week. Store at -20 to -80 centigrade for twelve months from the date of receipt.
Storage Buffer	0.01M PBS, pH 7.4, 0.02% NLS
Reconstitution	Reconstitute in sterile water for a stock solution.

 Tel: 1-631-559-9269 1-516-512-3133

 Email: info@creative-biomart.com  Fax: 1-631-938-8127

 45-1 Ramsey Road, Shirley, NY 11967, USA

Shipping They are shipped out with dry ice/blue ice unless customers require otherwise.

GENE INFORMATION

Gene Name [MYL2 myosin, light chain 2, regulatory, cardiac, slow \[Homo sapiens \(human\) \]](#)

Official Symbol [MYL2](#)

Synonyms MYL2; myosin, light chain 2, regulatory, cardiac, slow; myosin, light polypeptide 2, regulatory, cardiac, slow; myosin regulatory light chain 2, ventricular/cardiac muscle isoform; cardiac ventricular myosin light chain 2; CMH10; MLC-2; MLC-2v; RLC of myosin; myosin light chain 2; regulatory light chain of myosin; slow cardiac myosin regulatory light chain 2; MLC2; DKFZp779C0562;

Gene ID [4633](#)

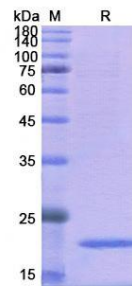
mRNA Refseq [NM_000432](#)

Protein Refseq [NP_000423](#)

MIM [160781](#)

UniProt ID [P10916](#)

SDS-PAGE



 Tel: 1-631-559-9269 1-516-512-3133

 Email: info@creative-biomart.com  Fax: 1-631-938-8127

 45-1 Ramsey Road, Shirley, NY 11967, USA