

Recombinant Human MYL2 protein, His-tagged

Cat. No. MYL2-5258H Lot. No. (See product label)

SPECIFICATION

Product Overview	Recombinant Human MYL2 protein(P10916)(8-164aa), fused to N-terminal His tag, was expressed in E. coli.
Species	Human
Source	E.coli
ProteinLength	8-164aa
Form	If the delivery form is liquid, the default storage buffer is Tris/PBS-based buffer, 5%-50% glycerol. If the delivery form is lyophilized powder, the buffer before lyophilization is Tris/PBS-based buffer, 6% Trehalose, pH 8.0.
Molecular Mass	21.8 kDa
Purity	Greater than 90% as determined by SDS-PAGE.
Storage	Store at -20°C/-80°C upon receipt, aliquoting is necessary for mutiple use. Avoid repeated freeze-thaw cycles.
Reconstitution	Please reconstitute protein in deionized sterile water to a concentration of 0.1-1.0 mg/mL. We recommend to add 5-50% of glycerol (final concentration) and aliquot for long-term storage at -20°C/-80°C. Our default final concentration of glycerol is 50%.

 Tel: 1-631-559-9269 1-516-512-3133

 Email: info@creative-biomart.com  Fax: 1-631-938-8127

 45-1 Ramsey Road, Shirley, NY 11967, USA

GENE INFORMATION

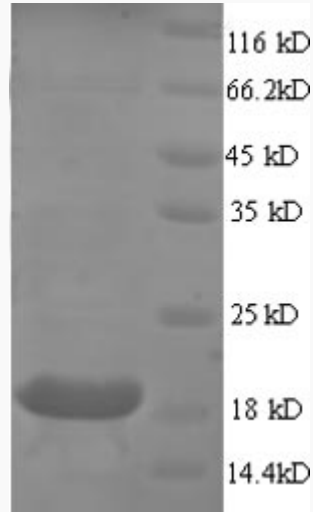
Gene Name	MYL2 myosin, light chain 2, regulatory, cardiac, slow [Homo sapiens]
Official Symbol	MYL2
Synonyms	MYL2; myosin, light chain 2, regulatory, cardiac, slow; myosin, light polypeptide 2, regulatory, cardiac, slow; myosin regulatory light chain 2, ventricular/cardiac muscle isoform; cardiac ventricular myosin light chain 2; CMH10; MLC-2; MLC-2v; RLC of myosin; myosin light chain 2; regulatory light chain of myosin; slow cardiac myosin regulatory light chain 2; MLC2; DKFZp779C0562;
Gene ID	4633
mRNA Refseq	NM_000432
Protein Refseq	NP_000423
MIM	160781
UniProt ID	P10916

 Tel: 1-631-559-9269 1-516-512-3133

 Email: info@creative-biomart.com  Fax: 1-631-938-8127

 45-1 Ramsey Road, Shirley, NY 11967, USA

SDS-PAGE



 Tel: 1-631-559-9269 1-516-512-3133

 Email: info@creative-biomart.com  Fax: 1-631-938-8127

 45-1 Ramsey Road, Shirley, NY 11967, USA