

# Recombinant Full Length Human MYL2 Protein, C-Flag-tagged

Cat. No. MYL2-960HFL Lot. No. (See product label)

## SPECIFICATION

<b>Product Overview</b>	Recombinant Full Length Human MYL2 Protein, fused to Flag-tag at C-terminus, was expressed in Mammalian cells.
<b>Species</b>	Human
<b>Source</b>	Mammalian Cells
<b>Description</b>	This gene encodes a major sarcomeric protein in mammalian striated muscle. The encoded protein plays a role in embryonic heart muscle structure and function, while phosphorylation of the encoded protein is involved in cardiac myosin cycling kinetics, torsion and function in adults. Mutations in this gene are associated with hypertrophic cardiomyopathy 10 and infant-onset myopathy.
<b>Form</b>	25 mM Tris HCl, pH 7.3, 100 mM glycine, 10% glycerol.
<b>Molecular Mass</b>	18.6 kDa
<b>AA Sequence</b>	MAPKKAKKRAGGANSNVFSMFEQTQIQEFKEAFTIMDQNRDGFIDKNDLRDTFAAL GRVNVKNEEIDEMI KEAPGPINFTVFLTMFGEKLGADPEETILNAFKVFDPEGKGVL KADYVREMLTTQAERFSKEEVDQMFA AFPPDVTGNLDYKNLVHIITHGEEKDTRTRPLEQKLISEEDLAANDILDYKDDDDKV
<b>Purity</b>	> 80% as determined by SDS-PAGE and Coomassie blue staining.
<b>Stability</b>	Stable for 12 months from the date of receipt of the product under proper storage and

 Tel: 1-631-559-9269 1-516-512-3133

 Email: [info@creative-biomart.com](mailto:info@creative-biomart.com)  Fax: 1-631-938-8127

 45-1 Ramsey Road, Shirley, NY 11967, USA

	handling conditions. Avoid repeated freeze-thaw cycles.
<b>Storage</b>	Store at -80 centigrade.
<b>Concentration</b>	>50 ug/mL as determined by microplate BCA method.
<b>Preparation</b>	Recombinant protein was captured through anti-DDK affinity column followed by conventional chromatography steps.
<b>Protein Pathways</b>	Cardiac muscle contraction, Dilated cardiomyopathy, Focal adhesion, Hypertrophic cardiomyopathy (HCM), Leukocyte transendothelial migration, Regulation of actin cytoskeleton, Tight junction
<b>Full Length</b>	Full L.
<b>GENE INFORMATION</b>	
<b>Gene Name</b>	MYL2 myosin light chain 2 [ Homo sapiens (human) ]
<b>Official Symbol</b>	MYL2
<b>Synonyms</b>	MLC2; CMH10; MFM12; MLC-2; MLC-2v; MLC-2s/v
<b>Gene ID</b>	4633
<b>mRNA Refseq</b>	NM_000432.4
<b>Protein Refseq</b>	NP_000423.2
<b>MIM</b>	160781

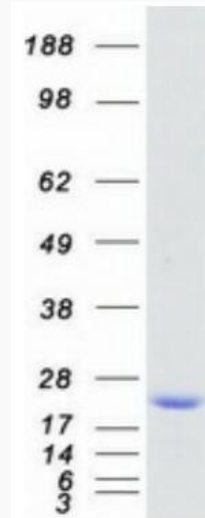
 Tel: 1-631-559-9269 1-516-512-3133

 Email: [info@creative-biomart.com](mailto:info@creative-biomart.com)  Fax: 1-631-938-8127

 45-1 Ramsey Road, Shirley, NY 11967, USA

UniProt ID

P10916



Coomassie blue staining of purified MYL2 protein.

 Tel: 1-631-559-9269 1-516-512-3133

 Email: [info@creative-biomart.com](mailto:info@creative-biomart.com)  Fax: 1-631-938-8127

 45-1 Ramsey Road, Shirley, NY 11967, USA