

# Recombinant Human MYL6 Protein, Myc/DDK-tagged, C13 and N15-labeled

**Cat. No.** MYL6-3441H    **Lot. No.** (See product label)

## SPECIFICATION

<b>Product Overview</b>	MYL6 MS Standard C13 and N15-labeled recombinant protein (NP_066299) with a C-terminal MYC/DDK tag, was expressed in HEK293 cells.
<b>Species</b>	Human
<b>Source</b>	HEK293
<b>Description</b>	Myosin is a hexameric ATPase cellular motor protein. It is composed of two heavy chains, two nonphosphorylatable alkali light chains, and two phosphorylatable regulatory light chains. This gene encodes a myosin alkali light chain that is expressed in smooth muscle and non-muscle tissues. Genomic sequences representing several pseudogenes have been described and two transcript variants encoding different isoforms have been identified for this gene.
<b>Molecular Mass</b>	16.9 kDa
<b>AA Sequence</b>	MCDFTEDQTAEFKEAFQLFDRTGDGKILYSQCGDVMRALGQNPTNAEVLKVLGNPK SDEMNVKVLDFEHFLPMLQTVAKNKDQGYEDYVEGLRVFDKEGNGTVMGAEIRH VLVTLGEKMTEEEVEMLVAGHEDSNGCINYEAFVRHILSGTRTRPLEQKLISEEDLAA NDILDYKDDDDKV
<b>Purity</b>	> 80% as determined by SDS-PAGE and Coomassie blue staining
<b>Stability</b>	Stable for 3 months from receipt of products under proper storage and handling

 Tel: 1-631-559-9269    1-516-512-3133

 Email: [info@creative-biomart.com](mailto:info@creative-biomart.com)     Fax: 1-631-938-8127

 45-1 Ramsey Road, Shirley, NY 11967, USA

conditions.

**Storage** Store at -80 centigrade. Avoid repeated freeze-thaw cycles.

**Concentration** 50 µg/mL as determined by BCA

**Storage Buffer** 100 mM glycine, 25 mM Tris-HCl, pH 7.3.

## GENE INFORMATION

**Gene Name** MYL6 myosin light chain 6 [ Homo sapiens (human) ]

**Official Symbol** MYL6

**Synonyms** MYL6; myosin, light chain 6, alkali, smooth muscle and non-muscle; myosin, light polypeptide 6, alkali, smooth muscle and non muscle; myosin light polypeptide 6; ESMLC; MLC1SM; MLC3NM; myosin light chain A3; 17 kDa myosin light chain; myosin light chain alkali 3; myosin, light polypeptide 6, alkali, smooth muscle and non-muscle; LC17; LC17A; LC17B; MLC-3; MLC3SM; LC17-GI; LC17-NM;

**Gene ID** 4637

**mRNA Refseq** NM\_021019

**Protein Refseq** NP\_066299

**MIM** 609931

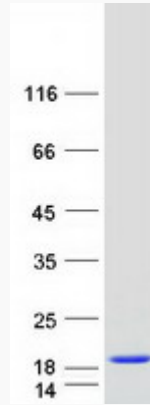
**UniProt ID** P60660

 Tel: 1-631-559-9269 1-516-512-3133

 Email: [info@creative-biomart.com](mailto:info@creative-biomart.com)  Fax: 1-631-938-8127

 45-1 Ramsey Road, Shirley, NY 11967, USA

**SDS-PAGE**



 Tel: 1-631-559-9269 1-516-512-3133

 Email: [info@creative-biomart.com](mailto:info@creative-biomart.com)  Fax: 1-631-938-8127

 45-1 Ramsey Road, Shirley, NY 11967, USA