

Recombinant Human MYL6 Protein (Phe4-Arg146), N-His tagged

Cat. No. MYL6-4650H Lot. No. (See product label)

SPECIFICATION

Product Overview	Recombinant human MYL6 (Phe4-Arg146) fused with the N-His tag was expressed in E. coli.
Species	Human
Source	E.coli
ProteinLength	Phe4-Arg146
Form	Lyophilized powder/frozen liquid
Molecular Mass	18.38 kDa
Purity	>90% as determined by SDS-PAGE.
Notes	For research use only.
Storage	Use a manual defrost freezer and avoid repeated freeze thaw cycles. Store at 2 to 8 centigrade for one week. Store at -20 to -80 centigrade for twelve months from the date of receipt.
Storage Buffer	0.01M PBS, pH 7.4, 0.02% NLS
Reconstitution	Reconstitute in sterile water for a stock solution.

 Tel: 1-631-559-9269 1-516-512-3133

 Email: info@creative-biomart.com  Fax: 1-631-938-8127

 45-1 Ramsey Road, Shirley, NY 11967, USA

Shipping They are shipped out with dry ice/blue ice unless customers require otherwise.

GENE INFORMATION

Gene Name [MYL6 myosin, light chain 6, alkali, smooth muscle and non-muscle \[Homo sapiens \(human\) \]](#)

Official Symbol [MYL6](#)

Synonyms MYL6; myosin, light chain 6, alkali, smooth muscle and non-muscle; myosin, light polypeptide 6, alkali, smooth muscle and non muscle; myosin light polypeptide 6; ESMLC; MLC1SM; MLC3NM; myosin light chain A3; 17 kDa myosin light chain; myosin light chain alkali 3; myosin, light polypeptide 6, alkali, smooth muscle and non-muscle; LC17; LC17A; LC17B; MLC-3; MLC3SM; LC17-GI; LC17-NM;

Gene ID [4637](#)

mRNA Refseq [NM_021019](#)

Protein Refseq [NP_066299](#)

MIM [609931](#)

UniProt ID [P60660](#)

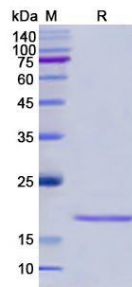
 Tel: 1-631-559-9269 1-516-512-3133

 Email: info@creative-biomart.com  Fax: 1-631-938-8127

 45-1 Ramsey Road, Shirley, NY 11967, USA



SDS-PAGE



Tel: 1-631-559-9269 1-516-512-3133

Email: info@creative-biomart.com Fax: 1-631-938-8127

45-1 Ramsey Road, Shirley, NY 11967, USA