

## Recombinant Human MYL6 Protein, GST-tagged

**Cat. No.** MYL6-5814H    **Lot. No.** (See product label)

### SPECIFICATION

<b>Product Overview</b>	Human MYL6 full-length ORF ( NP_066299.2, 1 a.a. - 151 a.a.) recombinant protein with GST-tag at N-terminal.
<b>Species</b>	Human
<b>Source</b>	Wheat Germ
<b>Description</b>	Myosin is a hexameric ATPase cellular motor protein. It is composed of two heavy chains, two nonphosphorylatable alkali light chains, and two phosphorylatable regulatory light chains. This gene encodes a myosin alkali light chain that is expressed in smooth muscle and non-muscle tissues. Genomic sequences representing several pseudogenes have been described and two transcript variants encoding different isoforms have been identified for this gene. [provided by RefSeq]
<b>Molecular Mass</b>	43.3 kDa
<b>AA Sequence</b>	MCDFTEDQTAEFKEAFQLFDRTGDGKILYSQCGDVMRALGQNPTNAEVLKVLGNPK SDEMNVKVLDFEHFLPMLQTVAKNKDQGYEDYVEGLRVFDKEGNGTVMGAEIRH VLVTLGEKMTEEEVEMLVAGHEDSNGCINYEAFVRHILSG
<b>Applications</b>	Enzyme-linked Immunoabsorbent Assay Western Blot (Recombinant protein) Antibody Production Protein Array

 Tel: 1-631-559-9269    1-516-512-3133

 Email: [info@creative-biomart.com](mailto:info@creative-biomart.com)     Fax: 1-631-938-8127

 45-1 Ramsey Road, Shirley, NY 11967, USA

<b>Notes</b>	Best use within three months from the date of receipt of this protein.
<b>Storage</b>	Store at -80 centigrade. Aliquot to avoid repeated freezing and thawing.
<b>Storage Buffer</b>	50 mM Tris-HCl, 10 mM reduced Glutathione, pH=8.0 in the elution buffer.
<b>GENE INFORMATION</b>	
<b>Gene Name</b>	MYL6 myosin, light chain 6, alkali, smooth muscle and non-muscle [ Homo sapiens ]
<b>Official Symbol</b>	MYL6
<b>Synonyms</b>	MYL6; myosin, light chain 6, alkali, smooth muscle and non-muscle; myosin, light polypeptide 6, alkali, smooth muscle and non muscle; myosin light polypeptide 6; ESMLC; MLC1SM; MLC3NM; myosin light chain A3; 17 kDa myosin light chain; myosin light chain alkali 3; myosin, light polypeptide 6, alkali, smooth muscle and non-muscle; LC17; LC17A; LC17B; MLC-3; MLC3SM; LC17-GI; LC17-NM;
<b>Gene ID</b>	4637
<b>mRNA Refseq</b>	NM_021019
<b>Protein Refseq</b>	NP_066299
<b>MIM</b>	609931
<b>UniProt ID</b>	P60660

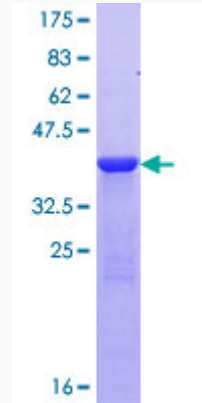
 Tel: 1-631-559-9269 1-516-512-3133

 Email: [info@creative-biomart.com](mailto:info@creative-biomart.com)  Fax: 1-631-938-8127

 45-1 Ramsey Road, Shirley, NY 11967, USA

**Quality Control**

**Testing:**



12.5% SDS-PAGE Stained with Coomassie Blue.

 Tel: 1-631-559-9269 1-516-512-3133

 Email: [info@creative-biomart.com](mailto:info@creative-biomart.com)  Fax: 1-631-938-8127

 45-1 Ramsey Road, Shirley, NY 11967, USA