

Recombinant Human MYL6 Protein, Myc/DDK-tagged, C13 and N15-labeled

Cat. No. MYL6-6207H **Lot. No.** (See product label)

SPECIFICATION

Product Overview	MYL6 MS Standard C13 and N15-labeled recombinant protein (NP_524147) with a C-terminal MYC/DDK tag, was expressed in HEK293 cells.
Species	Human
Source	HEK293
Description	Myosin is a hexameric ATPase cellular motor protein. It is composed of two heavy chains, two nonphosphorylatable alkali light chains, and two phosphorylatable regulatory light chains. This gene encodes a myosin alkali light chain that is expressed in smooth muscle and non-muscle tissues. Genomic sequences representing several pseudogenes have been described and two transcript variants encoding different isoforms have been identified for this gene.
Molecular Mass	17 kDa
AA Sequence	MCDFTEDQTAEFKEAFQLFDRTGDGKILYSQCGDVMRALGQNPTNAEVLKVLGNPK SDEMNVKVLDFEHFLPMLQTVAKNKDQGYEDYVEGLRVFDKEGNGTVMGAEIRH VLVTLGEKMTEEEVEMLVAGHEDSNGCINYEELVRMVLNGTRTRPLEQKLISEEDLA ANDILDYKDDDDKV
Purity	> 80% as determined by SDS-PAGE and Coomassie blue staining
Stability	Stable for 3 months from receipt of products under proper storage and handling

 Tel: 1-631-559-9269 1-516-512-3133

 Email: info@creative-biomart.com  Fax: 1-631-938-8127

 45-1 Ramsey Road, Shirley, NY 11967, USA

conditions.

Storage Store at -80 centigrade. Avoid repeated freeze-thaw cycles.

Concentration 50 µg/mL as determined by BCA

Storage Buffer 100 mM glycine, 25 mM Tris-HCl, pH 7.3.

GENE INFORMATION

Gene Name MYL6 myosin light chain 6 [Homo sapiens (human)]

Official Symbol MYL6

Synonyms MYL6; myosin, light chain 6, alkali, smooth muscle and non-muscle; myosin, light polypeptide 6, alkali, smooth muscle and non muscle; myosin light polypeptide 6; ESMLC; MLC1SM; MLC3NM; myosin light chain A3; 17 kDa myosin light chain; myosin light chain alkali 3; myosin, light polypeptide 6, alkali, smooth muscle and non-muscle; LC17; LC17A; LC17B; MLC-3; MLC3SM; LC17-GI; LC17-NM;

Gene ID 4637

mRNA Refseq NM_079423

Protein Refseq NP_524147

MIM 609931

UniProt ID P60660

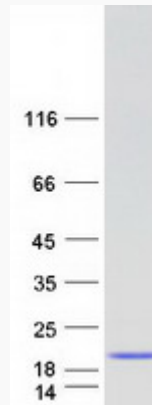
 Tel: 1-631-559-9269 1-516-512-3133

 Email: info@creative-biomart.com  Fax: 1-631-938-8127

 45-1 Ramsey Road, Shirley, NY 11967, USA



SDS-PAGE



☎ Tel: 1-631-559-9269 1-516-512-3133

☎ Email: info@creative-biomart.com ☎ Fax: 1-631-938-8127

☎ 45-1 Ramsey Road, Shirley, NY 11967, USA