

Recombinant Human MYL6B Protein (Lys5-Glu199), N-His tagged

Cat. No. MYL6B-4022H Lot. No. (See product label)

SPECIFICATION

Product Overview	Recombinant human MYL6B (Lys5-Glu199) fused with the N-His tag was expressed in E. coli.
Species	Human
Source	E.coli
ProteinLength	Lys5-Glu199
Form	Lyophilized powder/frozen liquid
Molecular Mass	23.61 kDa
Purity	>90% as determined by SDS-PAGE.
Notes	For research use only.
Storage	Use a manual defrost freezer and avoid repeated freeze thaw cycles. Store at 2 to 8 centigrade for one week. Store at -20 to -80 centigrade for twelve months from the date of receipt.
Storage Buffer	0.01M PBS, pH 7.4, 0.02% NLS
Reconstitution	Reconstitute in sterile water for a stock solution.

 Tel: 1-631-559-9269 1-516-512-3133

 Email: info@creative-biomart.com  Fax: 1-631-938-8127

 45-1 Ramsey Road, Shirley, NY 11967, USA

Shipping They are shipped out with dry ice/blue ice unless customers require otherwise.

GENE INFORMATION

Gene Name	MYL6B myosin, light chain 6B, alkali, smooth muscle and non-muscle [Homo sapiens (human)]
Official Symbol	MYL6B
Synonyms	MYL6B; myosin, light chain 6B, alkali, smooth muscle and non-muscle; myosin, light polypeptide 6B, alkali, smooth muscle and non muscle; myosin light chain 6B; MLC1SA; myosin light chain 1 slow a; myosin alkali light chain 1 slow a; myosin light chain 1 slow-twitch muscle A isoform; myosin light chain 1, slow-twitch muscle A isoform; smooth muscle and nonmuscle myosin light chain alkali 6B; smooth muscle and non-muscle myosin alkali light chain 6B; myosin, light polypeptide 6B, alkali, smooth muscle and non-muscle;
Gene ID	140465
mRNA Refseq	NM_001199629
Protein Refseq	NP_001186558
MIM	609930
UniProt ID	P14649

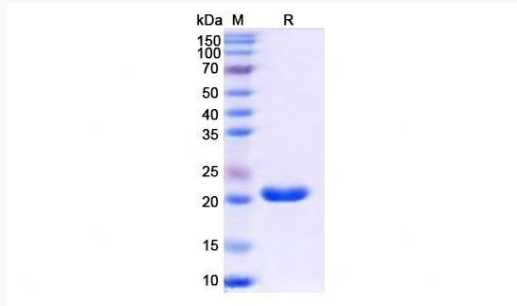
 Tel: 1-631-559-9269 1-516-512-3133

 Email: info@creative-biomart.com  Fax: 1-631-938-8127

 45-1 Ramsey Road, Shirley, NY 11967, USA



SDS-PAGE



Tel: 1-631-559-9269 1-516-512-3133

Email: info@creative-biomart.com Fax: 1-631-938-8127

45-1 Ramsey Road, Shirley, NY 11967, USA