

Recombinant Human MYL6B Protein, Myc/DDK-tagged, C13 and N15-labeled

Cat. No. MYL6B-4666H Lot. No. (See product label)

SPECIFICATION

Product Overview	MYL6B MS Standard C13 and N15-labeled recombinant protein (NP_002466) with a C-terminal MYC/DDK tag, was expressed in HEK293 cells.
Species	Human
Source	HEK293
Description	Myosin is a hexameric ATPase cellular motor protein. It is composed of two heavy chains, two nonphosphorylatable alkali light chains, and two phosphorylatable regulatory light chains. This gene encodes a myosin alkali light chain expressed in both slow-twitch skeletal muscle and in nonmuscle tissue. Alternative splicing results in multiple transcript variants.
Molecular Mass	22.8 kDa
AA Sequence	MPPKKDVPVKKPAGPSISKPAAKPAAAGAPPAKTKAEPVVPQAPQKTQEPPVDLSK VVIEFNKDQLEEFKEAFELFDRVGDGKILYSQCGDVMRALGQNPTNAEVLKVLGNPK SDELKSRRVDFETFLPMLQAVAKNRGQGTYEDYLEGFRVFDKEGNGKVMGAELRH VLTTLGEKMTEEEVETVLAGHEDSNGCINYEAFKHLISVTRTRPLEQKLISEEDLAA NDILDYKDDDDKV
Purity	> 80% as determined by SDS-PAGE and Coomassie blue staining
Stability	Stable for 3 months from receipt of products under proper storage and handling

 Tel: 1-631-559-9269 1-516-512-3133

 Email: info@creative-biomart.com  Fax: 1-631-938-8127

 45-1 Ramsey Road, Shirley, NY 11967, USA

conditions.

Storage Store at -80 centigrade. Avoid repeated freeze-thaw cycles.

Concentration 50 µg/mL as determined by BCA

Storage Buffer 100 mM glycine, 25 mM Tris-HCl, pH 7.3.

GENE INFORMATION

Gene Name MYL6B myosin light chain 6B [Homo sapiens (human)]

Official Symbol MYL6B

Synonyms

MYL6B; myosin, light chain 6B, alkali, smooth muscle and non-muscle; myosin, light polypeptide 6B, alkali, smooth muscle and non muscle; myosin light chain 6B; MLC1SA; myosin light chain 1 slow a; myosin alkali light chain 1 slow a; myosin light chain 1 slow-twitch muscle A isoform; myosin light chain 1, slow-twitch muscle A isoform; smooth muscle and nonmuscle myosin light chain alkali 6B; smooth muscle and non-muscle myosin alkali light chain 6B; myosin, light polypeptide 6B, alkali, smooth muscle and non-muscle;

Gene ID 140465

mRNA Refseq NM_002475

Protein Refseq NP_002466

MIM 609930

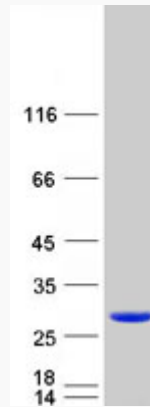
UniProt ID P14649

 Tel: 1-631-559-9269 1-516-512-3133

 Email: info@creative-biomart.com  Fax: 1-631-938-8127

 45-1 Ramsey Road, Shirley, NY 11967, USA

SDS-PAGE



 Tel: 1-631-559-9269 1-516-512-3133

 Email: info@creative-biomart.com  Fax: 1-631-938-8127

 45-1 Ramsey Road, Shirley, NY 11967, USA