

Recombinant Human MYL6B Protein, GST-tagged

Cat. No. MYL6B-5380H Lot. No. (See product label)

SPECIFICATION

Product Overview	Human MLC1SA full-length ORF (NP_002466.1, 1 a.a. - 208 a.a.) recombinant protein with GST-tag at N-terminal.
Species	Human
Source	Wheat Germ
Description	Myosin is a hexameric ATPase cellular motor protein. It is composed of two heavy chains, two nonphosphorylatable alkali light chains, and two phosphorylatable regulatory light chains. This gene encodes a myosin alkali light chain expressed in both slow-twitch skeletal muscle and in nonmuscle tissue. [provided by RefSeq
Molecular Mass	49.2 kDa
AA Sequence	MPPKKDVPVKKPAGPSISKPAAKPAAAGAPPAKTKAEPVQAPQKTQEPPVDLSK VVIEFNKDQLEEFKEAFELFDRVGDGKILYSQCGDVMRALGQNPTNAEVLKVLGNPK SDELKSRRVDFETFLPMLQAVAKNRGQGTYEDYLEGFRVFDKEGNGKVMGAELRH VLTTLGEKMTEEEVETVLAGHEDSNGCINYEAFKHLISV
Applications	Antibody Production Functional Study Compound Screening
Notes	Best use within three months from the date of receipt of this protein.

 Tel: 1-631-559-9269 1-516-512-3133

 Email: info@creative-biomart.com  Fax: 1-631-938-8127

 45-1 Ramsey Road, Shirley, NY 11967, USA

Storage Store at -80 centigrade. Aliquot to avoid repeated freezing and thawing.

Storage Buffer 50 mM Tris-HCl, 10 mM reduced Glutathione, pH=8.0 in the elution buffer.

GENE INFORMATION

Gene Name MYL6B myosin, light chain 6B, alkali, smooth muscle and non-muscle [Homo sapiens]

Official Symbol MYL6B

Synonyms MYL6B; myosin, light chain 6B, alkali, smooth muscle and non-muscle; myosin, light polypeptide 6B, alkali, smooth muscle and non muscle; myosin light chain 6B; MLC1SA; myosin light chain 1 slow a; myosin alkali light chain 1 slow a; myosin light chain 1 slow-twitch muscle A isoform; myosin light chain 1, slow-twitch muscle A isoform; smooth muscle and nonmuscle myosin light chain alkali 6B; smooth muscle and non-muscle myosin alkali light chain 6B; myosin, light polypeptide 6B, alkali, smooth muscle and non-muscle;

Gene ID 140465

mRNA Refseq NM_001199629

Protein Refseq NP_001186558

MIM 609930

UniProt ID P14649

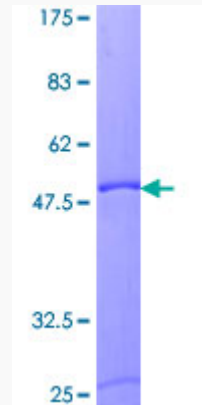
 Tel: 1-631-559-9269 1-516-512-3133

 Email: info@creative-biomart.com  Fax: 1-631-938-8127

 45-1 Ramsey Road, Shirley, NY 11967, USA

Quality Control

Testing:



12.5% SDS-PAGE Stained with Coomassie Blue.

 Tel: 1-631-559-9269 1-516-512-3133

 Email: info@creative-biomart.com  Fax: 1-631-938-8127

 45-1 Ramsey Road, Shirley, NY 11967, USA