

## Recombinant Human MYO1A Protein, GST-tagged

Cat. No. MYO1A-5830H Lot. No. (See product label)

### SPECIFICATION

<b>Product Overview</b>	Human MYO1A partial ORF ( NP_005370, 944 a.a. - 1043 a.a.) recombinant protein with GST-tag at N-terminal.
<b>Species</b>	Human
<b>Source</b>	Wheat Germ
<b>Description</b>	<p>The protein encoded by this gene belongs to the myosin superfamily. Myosins are molecular motors that, upon interaction with actin filaments, utilize energy from ATP hydrolysis to generate mechanical force. Each myosin has a conserved N-terminal motor domain that contains both ATP-binding and actin-binding sequences. Following the motor domain is a light-chain-binding neck region containing 1-6 copies of a repeat element, the IQ motif, that serves as a binding site for calmodulin or other members of the EF-hand superfamily of calcium-binding proteins. At the C-terminus, each myosin class has a distinct tail domain that serves in dimerization, membrane binding, protein binding, and/or enzymatic activities and targets each myosin to its particular subcellular location. The kidney epithelial cell line, LLC-PK1-CL4 (CL4), forms a well ordered brush border (BB) on its apical surface. Experiments indicate that the brush border population of the encoded protein turns over rapidly, while its head and tail domains interact transiently with the core actin and plasma membrane, respectively. A rapidly exchanging pool of the protein encoded by this gene envelops an actin core bundle that, by comparison, is static in structure. [provided by RefSeq</p>
<b>Molecular Mass</b>	36.74 kDa

 Tel: 1-631-559-9269 1-516-512-3133

 Email: [info@creative-biomart.com](mailto:info@creative-biomart.com)  Fax: 1-631-938-8127

 45-1 Ramsey Road, Shirley, NY 11967, USA

<b>AA Sequence</b>	SVTSLKDGLFSLHLSEMSSVGSKGDFLLVSEHVIELLTKMYRAVL DATQRQLT VTVTE KFSVRFKENSVAVKVVQGPAGGDN SKLRYKKKGSHCLEVTVQ
<b>Applications</b>	Enzyme-linked Immunoabsorbent Assay Western Blot (Recombinant protein) Antibody Production Protein Array
<b>Notes</b>	Best use within three months from the date of receipt of this protein.
<b>Storage</b>	Store at -80 centigrade. Aliquot to avoid repeated freezing and thawing.
<b>Storage Buffer</b>	50 mM Tris-HCl, 10 mM reduced Glutathione, pH=8.0 in the elution buffer.

## GENE INFORMATION

<b>Gene Name</b>	MYO1A myosin IA [ Homo sapiens ]
<b>Official Symbol</b>	MYO1A
<b>Synonyms</b>	MYO1A; myosin IA; DFNA48, MYHL; unconventional myosin-Ia; myosin I heavy chain; brush border myosin I; myosin, heavy polypeptide-like (100kD); BBMI; MIHC; MYHL; DFNA48;
<b>Gene ID</b>	4640
<b>mRNA Refseq</b>	NM_001256041
<b>Protein Refseq</b>	NP_001242970
<b>MIM</b>	601478

 Tel: 1-631-559-9269 1-516-512-3133

 Email: [info@creative-biomart.com](mailto:info@creative-biomart.com)  Fax: 1-631-938-8127

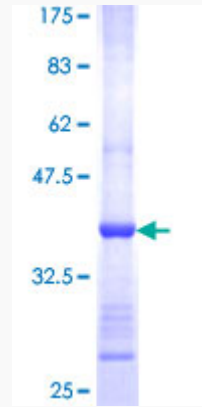
 45-1 Ramsey Road, Shirley, NY 11967, USA

UniProt ID

Q9UBC5

Quality Control

Testing:



12.5% SDS-PAGE Stained with Coomassie Blue.

 Tel: 1-631-559-9269 1-516-512-3133

 Email: [info@creative-biomart.com](mailto:info@creative-biomart.com)  Fax: 1-631-938-8127

 45-1 Ramsey Road, Shirley, NY 11967, USA