

Recombinant Human MYO1B Protein, GST-tagged

Cat. No. MYO1B-5831H Lot. No. (See product label)

SPECIFICATION

Product Overview	Human MYO1B partial ORF (NP_036355, 979 a.a. - 1078 a.a.) recombinant protein with GST-tag at N-terminal.
Species	Human
Source	Wheat Germ
Description	MYO1B (Myosin IB) is a Protein Coding gene. Diseases associated with MYO1B include Glass Syndrome and Amebiasis. Among its related pathways are Sertoli-Sertoli Cell Junction Dynamics and Actin Nucleation by ARP-WASP Complex. GO annotations related to this gene include calmodulin binding and motor activity. An important paralog of this gene is MYO1A.
Molecular Mass	36.74 kDa
AA Sequence	VSMSSQNDGFFAVHLKEGSEAASKGDFLFSSDHLIEMATKLYRTTLSQTKQKLNIEIS DEFLVQFRQDKVCVKFIQGNQKNGSVPTCKRKNNRLLLEVAVP
Applications	Enzyme-linked Immunoabsorbent Assay Western Blot (Recombinant protein) Antibody Production Protein Array
Notes	Best use within three months from the date of receipt of this protein.

 Tel: 1-631-559-9269 1-516-512-3133

 Email: info@creative-biomart.com  Fax: 1-631-938-8127

 45-1 Ramsey Road, Shirley, NY 11967, USA

Storage Store at -80 centigrade. Aliquot to avoid repeated freezing and thawing.

Storage Buffer 50 mM Tris-HCl, 10 mM reduced Glutathione, pH=8.0 in the elution buffer.

GENE INFORMATION

Gene Name MYO1B myosin IB [Homo sapiens (human)]

Official Symbol MYO1B

Synonyms MYO1B; myosin IB; MMLa; myr1; MYH-1c; MMI-alpha; unconventional myosin-Ib; MYO1B variant protein; myosin-I alpha

Gene ID 4430

mRNA Refseq NM_001130158

Protein Refseq NP_001123630

MIM 606537

UniProt ID O43795

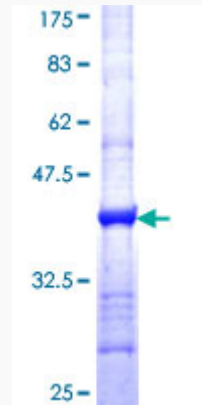
 Tel: 1-631-559-9269 1-516-512-3133

 Email: info@creative-biomart.com  Fax: 1-631-938-8127

 45-1 Ramsey Road, Shirley, NY 11967, USA

Quality Control

Testing:



12.5% SDS-PAGE Stained with Coomassie Blue.

 Tel: 1-631-559-9269 1-516-512-3133

 Email: info@creative-biomart.com  Fax: 1-631-938-8127

 45-1 Ramsey Road, Shirley, NY 11967, USA