

Recombinant Human MYO1C Protein, GST-tagged

Cat. No. MYO1C-5832H **Lot. No.** (See product label)

SPECIFICATION

Product Overview	Human MYO1C full-length ORF (NP_203693.2, 1 a.a. - 1028 a.a.) recombinant protein with GST-tag at N-terminal.
Species	Human
Source	Wheat Germ
Description	This gene encodes a member of the unconventional myosin protein family, which are actin-based molecular motors. The protein is found in the cytoplasm, and one isoform with a unique N-terminus is also found in the nucleus. The nuclear isoform associates with RNA polymerase I and II and functions in transcription initiation. The mouse ortholog of this protein also functions in intracellular vesicle transport to the plasma membrane. Multiple transcript variants encoding different isoforms have been found for this gene. The related gene myosin IE has been referred to as myosin IC in the literature, but it is a distinct locus on chromosome 19. [provided by RefSeq]
Molecular Mass	144.3 kDa
AA Sequence	MESALTARDRVGVQDFVLLNFTSEAAFIENLRRRFRENLIYTYIGPVLVSVNPYRDL QIYSRQHMER YRGVSFYEVPPHLFAVADTVYRALRTERRDQAVMISGESGAGKTEA TKRLLQFYAETCPAPERGGAVRDRLLQSNPVLEAFGNAKTLRNDSSRF GK YMDV QDFDKGAPVGGHILSYLLEKSRVVHQNHGERNFHIFYQLLEGGEEETLRRLGLERNP QSYLYLVKGQCAKVSSINDKSDWKVVRKALTVIDFTEDEVEDLLSIVASVLHLGNIHF AANEESNAQVTTENQLKYLTRLLSVEGSTLREALTHRKIIAKGEELLSPLNLEQAAYA

 Tel: 1-631-559-9269 1-516-512-3133

 Email: info@creative-biomart.com  Fax: 1-631-938-8127

 45-1 Ramsey Road, Shirley, NY 11967, USA

RDALAKAVYSRTFTWLVGKINRSLASKDVESPSWRSTTVLGLLDIYGFEVFAQHNSFE
 QFCINYCNEKLQQLFIELTLKSEQEEYEAEGIAWEPVQYFNNKIICDLVEEKFKGIISIL
 DEECLRPGEATDLTFLEKLEDTVKHHPHFLTHKLADQRTRKSLGRGEFRLHYAGEV
 TYSVTGFLDKNNDLLFRNLKETMCSSKNPIMSQCDFRSELSDKKRPETVATQFKMSL
 LQLVEILQSKEPAYVRCIKPNDKQPGRFDEVLRHQVKYLGLLENLRVRRAGFAYR
 RKYEAFLQRYKSLCPETWPTWAGRPQDGVAVLVRHLGYKPEEYKMGRTKIFIRFPK
 TLFATEDALEVRRQSLATKIQAAWRGFHWQRKFLRVKRSIICQSWWRGTLGRRKA
 AKRKWAAQTIRRLIRGFILRHAPRCPENAFFLDHVRTSFLNLRRQLPRNVLDTSWP
 TPPPALREASELLRELCIKNMVWKYCRSISPEWKQQLQKAVASEIFKGKKNYPQS
 VPRLFISTRGTDIISPRVLQALGSEPIQYAVPVVKYDRKGYKPRSRQLLLTPNAVIV
 EDAKVKQRIDYANLTGISVSSLSDSLFLVHVQRADNKQKGDVVLQSDHVIETLTKTAL
 SANRVNSININQGSITFAGGPRDGTIDFTPGSELLITKAKNGHLAVVAPRLNSR

Applications

Enzyme-linked Immunoabsorbent Assay
 Western Blot (Recombinant protein)
 Antibody Production
 Protein Array

Notes

Best use within three months from the date of receipt of this protein.

Storage

Store at -80 centigrade. Aliquot to avoid repeated freezing and thawing.

Storage Buffer

50 mM Tris-HCl, 10 mM reduced Glutathione, pH=8.0 in the elution buffer.

GENE INFORMATION

Gene Name

MYO1C myosin IC [Homo sapiens]

Official Symbol

MYO1C

Synonyms

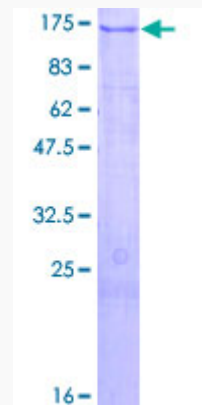
MYO1C; myosin IC; unconventional myosin-Ic; myr2; myosin-Ic; myosin I beta;

 Tel: 1-631-559-9269 1-516-512-3133

 Email: info@creative-biomart.com  Fax: 1-631-938-8127

 45-1 Ramsey Road, Shirley, NY 11967, USA

myosin-I beta; nuclear myosin I; NMI; MM1b; MMI-beta; FLJ23903;

Gene ID 4641**mRNA Refseq** NM_001080779**Protein Refseq** NP_001074248**MIM** 606538**UniProt ID** O00159**Quality Control
Testing:**

12.5% SDS-PAGE Stained with Coomassie Blue.

 Tel: 1-631-559-9269 1-516-512-3133 Email: info@creative-biomart.com  Fax: 1-631-938-8127 45-1 Ramsey Road, Shirley, NY 11967, USA