

Recombinant Human MYO1E Protein, GST-tagged

Cat. No. MYO1E-5836H Lot. No. (See product label)

SPECIFICATION

Product Overview	Human MYO1E partial ORF (NP_004989.2, 918 a.a. - 1014 a.a.) recombinant protein with GST-tag at N-terminal.
Species	Human
Source	Wheat Germ
Description	<p>This gene encodes a member of the nonmuscle class I myosins which are a subgroup of the unconventional myosin protein family. The unconventional myosin proteins function as actin-based molecular motors. Class I myosins are characterized by a head (motor) domain, a regulatory domain and a either a short or long tail domain. Among the class I myosins, this protein is distinguished by a long tail domain that is involved in crosslinking actin filaments. This protein localizes to the cytoplasm and may be involved in intracellular movement and membrane trafficking. Mutations in this gene are the cause of focal segmental glomerulosclerosis-6. This gene has been referred to as myosin IC in the literature but is distinct from the myosin IC gene located on chromosome 17. [provided by RefSeq, Jan 2012]</p>
Molecular Mass	36.41 kDa
AA Sequence	VSIGPGLPKNSRPTRRNTTQNTGYSSGTQNANYPVRAAPPPPGYHQNGVIRNQYVVP YPHAPGSQRSNQKSLYTSMARPPLPRQQSTSSDRVSQTPES
Applications	Enzyme-linked Immunoabsorbent Assay Western Blot (Recombinant protein)

 Tel: 1-631-559-9269 1-516-512-3133

 Email: info@creative-biomart.com  Fax: 1-631-938-8127

 45-1 Ramsey Road, Shirley, NY 11967, USA



	Antibody Production Protein Array
Notes	Best use within three months from the date of receipt of this protein.
Storage	Store at -80 centigrade. Aliquot to avoid repeated freezing and thawing.
Storage Buffer	50 mM Tris-HCl, 10 mM reduced Glutathione, pH=8.0 in the elution buffer.

GENE INFORMATION

Gene Name	MYO1E myosin IE [Homo sapiens (human)]
Official Symbol	MYO1E
Synonyms	MYO1E myosin IE; unconventional myosin-Ie; MYO1E variant protein; myosin-IC; unconventional myosin 1E; FSGS6; MYO1C; HuncM-IC
Gene ID	4643
mRNA Refseq	NM_004998
Protein Refseq	NP_004989
MIM	601479
UniProt ID	Q12965

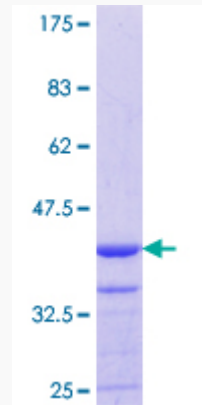
Tel: 1-631-559-9269 1-516-512-3133

Email: info@creative-biomart.com Fax: 1-631-938-8127

45-1 Ramsey Road, Shirley, NY 11967, USA

Quality Control

Testing:



12.5% SDS-PAGE Stained with Coomassie Blue.

 Tel: 1-631-559-9269 1-516-512-3133

 Email: info@creative-biomart.com  Fax: 1-631-938-8127

 45-1 Ramsey Road, Shirley, NY 11967, USA