

Recombinant Human MYO7B Protein, GST-tagged

Cat. No. MYO7B-5845H Lot. No. (See product label)

SPECIFICATION

| | |
|-------------------------|---|
| Product Overview | Human MYO7B partial ORF (XP_291001, 353 a.a. - 449 a.a.) recombinant protein with GST-tag at N-terminal. |
| Species | Human |
| Source | Wheat Germ |
| Description | The protein encoded by this gene is found in brush border microvilli of epithelial cells in the intestines and kidneys. The encoded protein is involved in linking protocadherins to the actin cytoskeleton and is essential for proper microvilli function. This protein aids in the accumulation of intermicrovillar adhesion components such as harmonin and ANKS4B, and this accumulation is necessary for normal brush border action. [provided by RefSeq, Jan 2017] |
| Molecular Mass | 36.41 kDa |
| AA Sequence | KERSIFAMALQDRKATDDTTLLAFKKGDLLVLTKKQGLLASENWTLGQNDRTGKTGL VPMACLYTIPTVTKPSAQLLSLLAMSPEKRKLAFAQEGQFT |
| Applications | Enzyme-linked Immunoabsorbent Assay Western Blot (Recombinant protein) Antibody Production Protein Array |
| Notes | Best use within three months from the date of receipt of this protein. |

 Tel: 1-631-559-9269 1-516-512-3133

 Email: info@creative-biomart.com  Fax: 1-631-938-8127

 45-1 Ramsey Road, Shirley, NY 11967, USA

Storage Store at -80 centigrade. Aliquot to avoid repeated freezing and thawing.

Storage Buffer 50 mM Tris-HCl, 10 mM reduced Glutathione, pH=8.0 in the elution buffer.

GENE INFORMATION

Gene Name MYO7B myosin VIIb [Homo sapiens]

Official Symbol MYO7B

Synonyms MYO7B; myosin VIIb; unconventional myosin-VIIb; myosin-VIIb; DKFZp686A08248;

Gene ID 4648

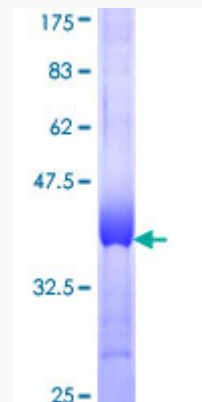
mRNA Refseq NM_001080527

Protein Refseq NP_001073996

MIM 606541

UniProt ID Q6PIF6

Quality Control Testing:



 Tel: 1-631-559-9269 1-516-512-3133

 Email: info@creative-biomart.com  Fax: 1-631-938-8127

 45-1 Ramsey Road, Shirley, NY 11967, USA



12.5% SDS-PAGE Stained with Coomassie Blue.

 Tel: 1-631-559-9269 1-516-512-3133

 Email: info@creative-biomart.com  Fax: 1-631-938-8127

 45-1 Ramsey Road, Shirley, NY 11967, USA