

Recombinant Human MYOC Protein, Myc/DDK-tagged, C13 and N15-labeled

Cat. No. MYOC-1196H Lot. No. (See product label)

SPECIFICATION

Product Overview	MYOC MS Standard C13 and N15-labeled recombinant protein (NP_000252) with a C-terminal MYC/DDK tag, was expressed in HEK293 cells.
Species	Human
Source	HEK293
Description	MYOC encodes the protein myocilin, which is believed to have a role in cytoskeletal function. MYOC is expressed in many ocular tissues, including the trabecular meshwork, and was revealed to be the trabecular meshwork glucocorticoid-inducible response protein (TIGR). The trabecular meshwork is a specialized eye tissue essential in regulating intraocular pressure, and mutations in MYOC have been identified as the cause of hereditary juvenile-onset open-angle glaucoma.
Molecular Mass	56.8 kDa
AA Sequence	MRFFCARCCSFGPEMPAVQLLLLACLVDVGARTAQLRKANDQSGRCQYTFSVAS PNESSCPEQSQAMSVIHNLQRDSSSTQRLDLEATKARLSSLESLLHQLTLDQAARPQ ETQEGLQRELGLRRERDQLETQTRELETAYSNLLRDKSVLEEEKKRLRQENENLA RRLESSSQEVARLRRGQCPQTRDTARAVPPGSREVSTWNLDLAFQELKSELTEVP ASRILKESPSGYLRSGEGDTGCGELVWVGEPLTLRTAETITGKYGVWMRDPKPTYP YTQETTWRIDTVGTDVRQVFEYDLISQFMQGYPSKVHILPRPLESTGAVVYSGSLYF QGAESRTVIRYELNTETVKAKEIPGAGYHGQFPYSWGYYTDIDLAVDEAGLWVIYS

 Tel: 1-631-559-9269 1-516-512-3133

 Email: info@creative-biomart.com  Fax: 1-631-938-8127

 45-1 Ramsey Road, Shirley, NY 11967, USA

TDEAKGAVLSKLNPENLELEQTWETNIRKQSVANAFIICGTLYTVSSYTSADATVNFA
YDTGTGISKTLTIPFKNRYKYSSMIDYNPLEKKLFAWDNLNMVTYDIKLSKMTRTRPL
EQKLISEEDLAANDILDYKDDDDKV

Purity > 80% as determined by SDS-PAGE and Coomassie blue staining

Stability Stable for 3 months from receipt of products under proper storage and handling conditions.

Storage Store at -80 centigrade. Avoid repeated freeze-thaw cycles.

Concentration 50 µg/mL as determined by BCA

Storage Buffer 100 mM glycine, 25 mM Tris-HCl, pH 7.3.

GENE INFORMATION

Gene Name MYOC myocilin [*Homo sapiens (human)*]

Official Symbol MYOC

Synonyms MYOC; myocilin, trabecular meshwork inducible glucocorticoid response; GLC1A; myocilin; JOAG1; TIGR; mutated trabecular meshwork-induced glucocorticoid response protein; GPOA; JOAG;

Gene ID 4653

mRNA Refseq NM_000261

Protein Refseq NP_000252

 Tel: 1-631-559-9269 1-516-512-3133

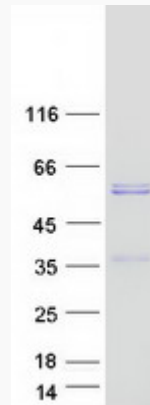
 Email: info@creative-biomart.com  Fax: 1-631-938-8127

 45-1 Ramsey Road, Shirley, NY 11967, USA

MIM 601652

UniProt ID Q99972

SDS-PAGE



 Tel: 1-631-559-9269 1-516-512-3133

 Email: info@creative-biomart.com  Fax: 1-631-938-8127

 45-1 Ramsey Road, Shirley, NY 11967, USA