

# Recombinant Full Length Human MYOC Protein, C-Flag-tagged

**Cat. No.** MYOC-296HFL    **Lot. No.** (See product label)

## SPECIFICATION

<b>Product Overview</b>	Recombinant Full Length Human MYOC Protein, fused to Flag-tag at C-terminus, was expressed in Mammalian cells.
<b>Species</b>	Human
<b>Source</b>	Mammalian Cells
<b>Description</b>	MYOC encodes the protein myocilin, which is believed to have a role in cytoskeletal function. MYOC is expressed in many ocular tissues, including the trabecular meshwork, and was revealed to be the trabecular meshwork glucocorticoid-inducible response protein (TIGR). The trabecular meshwork is a specialized eye tissue essential in regulating intraocular pressure, and mutations in MYOC have been identified as the cause of hereditary juvenile-onset open-angle glaucoma.
<b>Form</b>	25 mM Tris HCl, pH 7.3, 100 mM glycine, 10% glycerol.
<b>Molecular Mass</b>	56.8 kDa
<b>AA Sequence</b>	MRFFCARCCSFGPEMPAVQLLLLACLWVDVGARTAQLRKANDQSGRCQYTF SVAS PNESSCPEQSQAMSV IHNLQRDSSTQRDLLEATKARLSSLESLLHQLTLDQAARPQ ETQEGLQRELGLRRERDQLETQTRELET AYNLLRDKSVLEEEKKRLRQENENLA RRLESSSQEVARLRRGQCPQTRDTARAVPPGSREVSTWNLDL AFQELKSELTEV PASRILKESPSGYLRSGEGDTGCGELVWVGEPLTLRTAETITGKYGVWMRDPKPTY PY TQETTWRIDTVGTDVRQVFEYDLISQFMQGYPSKVHILPRPLESTGAVVYSGSLY FQGAESRTVIRYELN TETVKAKEKEIPGAGYHGQFPYSWGGYTDIDLAVDEAGLWVIY

 Tel: 1-631-559-9269    1-516-512-3133

 Email: [info@creative-biomart.com](mailto:info@creative-biomart.com)     Fax: 1-631-938-8127

 45-1 Ramsey Road, Shirley, NY 11967, USA

STDEAKGAVLSKLNPENLELEQWETN IRKQSVANAFIICGTLTYVSSYTSADATVN  
 FAYDTGTGISKTLTIPFKNRYKYSSMIDYNPLEKCLFAWD  
 NLNMVTYDIKLSKMTRTRPLEQKLISEEDLAANDILDYKDDDDKV

**Purity** > 80% as determined by SDS-PAGE and Coomassie blue staining.

**Stability** Stable for 12 months from the date of receipt of the product under proper storage and handling conditions. Avoid repeated freeze-thaw cycles.

**Storage** Store at -80 centigrade.

**Concentration** >50 ug/mL as determined by microplate BCA method.

**Preparation** Recombinant protein was captured through anti-DDK affinity column followed by conventional chromatography steps.

**Protein Families** Druggable Genome, Secreted Protein

**Full Length** Full L.

## GENE INFORMATION

**Gene Name** MYOC myocilin [ Homo sapiens (human) ]

**Official Symbol** MYOC

**Synonyms** GPOA; JOAG; TIGR; GLC1A; JOAG1

**Gene ID** 4653

**mRNA Refseq** NM\_000261.2

 Tel: 1-631-559-9269 1-516-512-3133

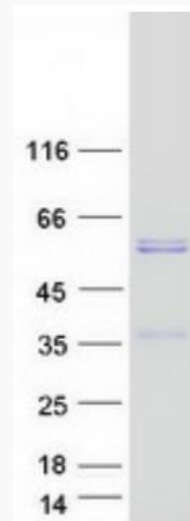
 Email: [info@creative-biomart.com](mailto:info@creative-biomart.com)  Fax: 1-631-938-8127

 45-1 Ramsey Road, Shirley, NY 11967, USA

**Protein Refseq** NP\_000252.1

**MIM** 601652

**UniProt ID** Q99972



Coomassie blue staining of purified MYOC protein.

 Tel: 1-631-559-9269 1-516-512-3133

 Email: [info@creative-biomart.com](mailto:info@creative-biomart.com)  Fax: 1-631-938-8127

 45-1 Ramsey Road, Shirley, NY 11967, USA