

Recombinant Human MYOF Protein, His-tagged

Cat. No. MYOF-2475H Lot. No. (See product label)

SPECIFICATION

| | |
|-------------------------|--|
| Product Overview | Recombinant Human MYOF Protein (Thr1126-Ile1638) with a N-His tag was expressed in E. coli. |
| Species | Human |
| Source | E.coli |
| ProteinLength | Thr1126-Ile1638 |
| Description | <p>Mutations in dysferlin, a protein associated with the plasma membrane, can cause muscle weakness that affects both proximal and distal muscles. The protein encoded by this gene is a type II membrane protein that is structurally similar to dysferlin. It is a member of the ferlin family and associates with both plasma and nuclear membranes.</p> <p>The protein contains C2 domains that play a role in calcium-mediated membrane fusion events, suggesting that it may be involved in membrane regeneration and repair. Two transcript variants encoding different isoforms have been found for this gene. Other possible variants have been detected, but their full-length nature has not been determined.</p> |
| Form | Freeze-dried powder |
| Molecular Mass | Predicted Molecular Mass: 62.4 kDa Accurate Molecular Mass: 62/44 kDa |
| Endotoxin | <1.0 EU per 1g (determined by the LAL method). |

 Tel: 1-631-559-9269 1-516-512-3133

 Email: info@creative-biomart.com  Fax: 1-631-938-8127

 45-1 Ramsey Road, Shirley, NY 11967, USA

| | |
|-----------------------|--|
| Purity | > 90% |
| Applications | Positive Control; Immunogen; SDS-PAGE; WB. |
| Stability | The thermal stability is described by the loss rate. The loss rate was determined by accelerated thermal degradation test, that is, incubate the protein at 37 centigrade for 48h, and no obvious degradation and precipitation were observed. The loss rate is less than 5% within the expiration date under appropriate storage condition. |
| Storage | Avoid repeated freeze/thaw cycles. Store at 2-8 centigrade for one month. Aliquot and store at -80 centigrade for 12 months. |
| Storage Buffer | 20mM Tris, 150mM NaCl, pH8.0, containing 1mM EDTA, 1mM DTT, 0.01% SKL, 5% Trehalose and Proclin300. |
| Reconstitution | Reconstitute in 20mM Tris, 150mM NaCl (pH8.0) to a concentration of 0.1-1.0 mg/mL. Do not vortex. |

GENE INFORMATION

| | |
|------------------------|---|
| Gene Name | MYOF myoferlin [Homo sapiens (human)] |
| Official Symbol | MYOF |
| Synonyms | MYOF; myoferlin; HAE7; FER1L3; myoferlin fer-1-like 3, myoferlin fer-1-like family member 3 fer-1-like protein 3 |
| Gene ID | 26509 |

 Tel: 1-631-559-9269 1-516-512-3133

 Email: info@creative-biomart.com  Fax: 1-631-938-8127

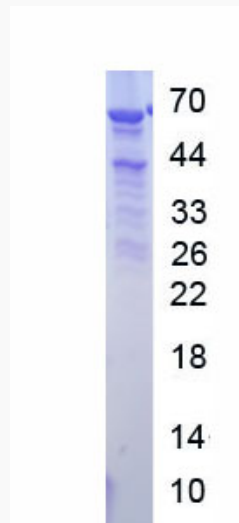
 45-1 Ramsey Road, Shirley, NY 11967, USA

mRNA Refseq [NM_013451](#)

Protein Refseq [NP_038479](#)

MIM [604603](#)

UniProt ID [Q9NZM1](#)



 Tel: 1-631-559-9269 1-516-512-3133

 Email: info@creative-biomart.com  Fax: 1-631-938-8127

 45-1 Ramsey Road, Shirley, NY 11967, USA