

Recombinant Human MYOF Protein, GST-tagged

Cat. No. MYOF-4074H **Lot. No.** (See product label)

SPECIFICATION

Product Overview	Human FER1L3 partial ORF (NP_038479, 655 a.a. - 754 a.a.) recombinant protein with GST-tag at N-terminal.
Species	Human
Source	Wheat Germ
Description	<p>Mutations in dysferlin, a protein associated with the plasma membrane, can cause muscle weakness that affects both proximal and distal muscles. The protein encoded by this gene is a type II membrane protein that is structurally similar to dysferlin. It is a member of the ferlin family and associates with both plasma and nuclear membranes. The protein contains C2 domains that play a role in calcium-mediated membrane fusion events, suggesting that it may be involved in membrane regeneration and repair. Two transcript variants encoding different isoforms have been found for this gene. Other possible variants have been detected, but their full-length nature has not been determined. [provided by RefSeq]</p>
Molecular Mass	36.74 kDa
AA Sequence	DAVNTLLAMAERLQTNIEALKSGIQGKIPANQLAELWLKLIDEVIEDTRYTLPLTEGKANVTVLDTQIRKLRSRSLSQIHEAAVRMRSEATDVKSTLAEI
Applications	<p>Enzyme-linked Immunoabsorbent Assay Western Blot (Recombinant protein) Antibody Production</p>

 Tel: 1-631-559-9269 1-516-512-3133

 Email: info@creative-biomart.com  Fax: 1-631-938-8127

 45-1 Ramsey Road, Shirley, NY 11967, USA

Protein Array

Notes	Best use within three months from the date of receipt of this protein.
Storage	Store at -80 centigrade. Aliquot to avoid repeated freezing and thawing.
Storage Buffer	50 mM Tris-HCl, 10 mM reduced Glutathione, pH=8.0 in the elution buffer.

GENE INFORMATION

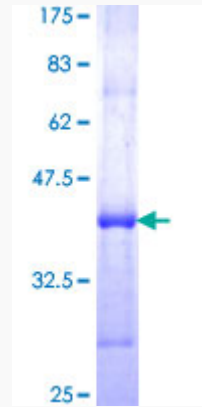
Gene Name	MYOF myoferlin [Homo sapiens (human)]
Official Symbol	MYOF
Synonyms	MYOF; myoferlin; FER1L3; myoferlin; fer-1-like 3, myoferlin; fer-1-like family member 3; fer-1-like protein 3; Myoferlin; Fer-1-Like Family Member 3; Fer-1-Like Protein 3; FER1L3; Fer-1 (C.Elegans)-Like 3 (Myoferlin); Fer-1-Like 3, Myoferlin (C. Elegans); Fer-1-Like 3, Myoferlin; KIAA1207
Gene ID	26509
mRNA Refseq	NM_013451
Protein Refseq	NP_038479
MIM	604603
UniProt ID	Q9NZM1

 Tel: 1-631-559-9269 1-516-512-3133

 Email: info@creative-biomart.com  Fax: 1-631-938-8127

 45-1 Ramsey Road, Shirley, NY 11967, USA

**Quality Control
Testing**



12.5% SDS-PAGE Stained with Coomassie Blue.

 Tel: 1-631-559-9269 1-516-512-3133

 Email: info@creative-biomart.com  Fax: 1-631-938-8127

 45-1 Ramsey Road, Shirley, NY 11967, USA