

Recombinant Human MYOG Protein, GST-tagged

Cat. No. MYOG-5853H **Lot. No.** (See product label)

SPECIFICATION

Product Overview	Human MYOG full-length ORF (AAH53899, 1 a.a. - 224 a.a.) recombinant protein with GST-tag at N-terminal.
Species	Human
Source	Wheat Germ
Description	Myogenin is a muscle-specific transcription factor that can induce myogenesis in a variety of cell types in tissue culture. It is a member of a large family of proteins related by sequence homology, the helix-loop-helix (HLH) proteins. It is essential for the development of functional skeletal muscle. [provided by RefSeq]
Molecular Mass	50.38 kDa
AA Sequence	MELYETSPYFYQEPRFYDGENYLPVHLQGFEPGGYERTELTLSPEAPGPLEDKGLG TPEHCPCGQCLPWACKVCKRKSVSVDRRRAATLREKRRLKKNVNEAFEALKRSTLLNP NQRLPKVEILRSAIQYIERLQALLSSLNQEERDLRYRGGGGPQPGVPSSECSHSASC SPEWGSALFESANPGDHLLTADPTDAHNLHSLTSIVDSITVEDVSVAFPDETMPN
Applications	Enzyme-linked Immunoabsorbent Assay Western Blot (Recombinant protein) Antibody Production Protein Array
Notes	Best use within three months from the date of receipt of this protein.

 Tel: 1-631-559-9269 1-516-512-3133

 Email: info@creative-biomart.com  Fax: 1-631-938-8127

 45-1 Ramsey Road, Shirley, NY 11967, USA

Storage Store at -80 centigrade. Aliquot to avoid repeated freezing and thawing.

Storage Buffer 50 mM Tris-HCl, 10 mM reduced Glutathione, pH=8.0 in the elution buffer.

GENE INFORMATION

Gene Name MYOG myogenin (myogenic factor 4) [Homo sapiens]

Official Symbol MYOG

Synonyms MYOG; myogenin (myogenic factor 4); MYF4; myogenin; bHLHc3; myf-4; myogenic factor 4; Myogenic factor-4; class C basic helix-loop-helix protein 3; MYOGENIN;

Gene ID 4656

mRNA Refseq NM_002479

Protein Refseq NP_002470

MIM 159980

UniProt ID P15173

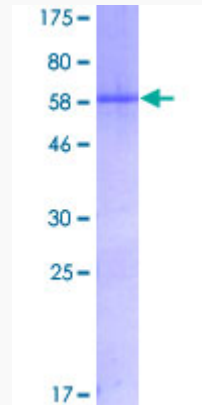
 Tel: 1-631-559-9269 1-516-512-3133

 Email: info@creative-biomart.com  Fax: 1-631-938-8127

 45-1 Ramsey Road, Shirley, NY 11967, USA

Quality Control

Testing:



12.5% SDS-PAGE Stained with Coomassie Blue.

 Tel: 1-631-559-9269 1-516-512-3133

 Email: info@creative-biomart.com  Fax: 1-631-938-8127

 45-1 Ramsey Road, Shirley, NY 11967, USA