

Recombinant Human MYOM1 Protein, GST-tagged

Cat. No. MYOM1-5854H Lot. No. (See product label)

SPECIFICATION

Product Overview Human MYOM1 partial ORF (NP_003794.2, 1586 a.a. - 1684 a.a.) recombinant protein with GST-tag at N-terminal.

Species Human

Source Wheat Germ


Description

The giant protein titin, together with its associated proteins, interconnects the major structure of sarcomeres, the M bands and Z discs. The C-terminal end of the titin string extends into the M line, where it binds tightly to M-band constituents of apparent molecular masses of 190 kD (myomesin 1) and 165 kD (myomesin 2). This protein, myomesin 1, like myomesin 2, titin, and other myofibrillar proteins contains structural modules with strong homology to either fibronectin type III (motif I) or immunoglobulin C2 (motif II) domains. Myomesin 1 and myomesin 2 each have a unique N-terminal region followed by 12 modules of motif I or motif II, in the arrangement II-II-I-I-I-I-II-II-II-II. The two proteins share 50% sequence identity in this repeat-containing region. The head structure formed by these 2 proteins on one end of the titin string extends into the center of the M band. The integrating structure of the sarcomere arises from muscle-specific members of the superfamily of immunoglobulin-like proteins. Alternatively spliced transcript variants encoding different isoforms have been identified. [provided by RefSeq]

Molecular Mass 36.63 kDa

 Tel: 1-631-559-9269 1-516-512-3133

 Email: info@creative-biomart.com  Fax: 1-631-938-8127

 45-1 Ramsey Road, Shirley, NY 11967, USA

AA Sequence	EGKALNLTCNVWGDPPPEVSWLKNEKALASDDHCNLKFEAGR TAYFTINGVSTADSGKYGLVVKNKYGSETSDFTVSVFIPEEEARMAALES LKGGKKA
Applications	Enzyme-linked Immunoabsorbent Assay Western Blot (Recombinant protein) Antibody Production Protein Array
Notes	Best use within three months from the date of receipt of this protein.
Storage	Store at -80 centigrade. Aliquot to avoid repeated freezing and thawing.
Storage Buffer	50 mM Tris-HCl, 10 mM reduced Glutathione, pH=8.0 in the elution buffer.

GENE INFORMATION

Gene Name	MYOM1 myomesin 1, 185kDa [Homo sapiens]
Official Symbol	MYOM1
Synonyms	MYOM1; myomesin 1, 185kDa; myomesin 1 (skelemin) (185kD) , myomesin 1 (skelemin) 185kDa; myomesin-1; skelemin; EH-myomesin; myomesin family member 1; myomesin 1 (skelemin) 185kDa; myomesin (M-protein) 1 (190kD); 190 kDa titin-associated protein; 190 kDa connectin-associated protein; SKELEMIN; MGC134946; MGC134947;
Gene ID	8736
mRNA Refseq	NM_003803
Protein Refseq	NP_003794

 Tel: 1-631-559-9269 1-516-512-3133

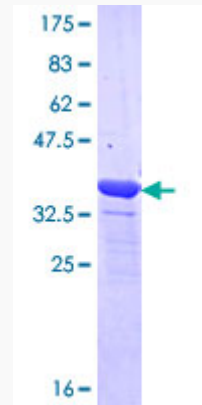
 Email: info@creative-biomart.com  Fax: 1-631-938-8127

 45-1 Ramsey Road, Shirley, NY 11967, USA


MIM 603508

UniProt ID P52179


**Quality Control
Testing:**



12.5% SDS-PAGE Stained with Coomassie Blue.

 Tel: 1-631-559-9269 1-516-512-3133

 Email: info@creative-biomart.com  Fax: 1-631-938-8127

 45-1 Ramsey Road, Shirley, NY 11967, USA