

Recombinant Human MYOZ1 Protein, GST-tagged

Cat. No. MYOZ1-5858H Lot. No. (See product label)

SPECIFICATION

Product Overview	Human MYOZ1 full-length ORF (NP_067068.1, 1 a.a. - 299 a.a.) recombinant protein with GST-tag at N-terminal.
Species	Human
Source	Wheat Germ
Description	The protein encoded by this gene is primarily expressed in the skeletal muscle, and belongs to the myozenin family. Members of this family function as calcineurin-interacting proteins that help tether calcineurin to the sarcomere of cardiac and skeletal muscle. They play an important role in modulation of calcineurin signaling. [provided by RefSeq, Apr 2012]
Molecular Mass	58.1 kDa
AA Sequence	MPLSGTPAPNKKRKSSKLIMELTGGGQESSGLNLGKKISVPRDVMLEELSLLTNRGS KMFKLRQMRVEKFIYENHPDVFSDDSSMDHFQKFLPTVGGQLGTAGQGFSYSKSNG RGGSQAGGSGSAGQYGSDDQHHLGSGSGAGGTGGPAGQAGRGAAGTAGVGE TGSGDQAGGEGKHITVFKTYISPWERAMGVDPQQKMEGLIDLLAYGAKAELPKYKS FNRTAMPYGGYEKASKRMTFQMPKFDLGPLLSEPLVLYNQNLNRPSTFNRTPIPWL SSGEPVDYNDIGIPLDGETEEL
Applications	Enzyme-linked Immunoabsorbent Assay Western Blot (Recombinant protein) Antibody Production

 Tel: 1-631-559-9269 1-516-512-3133

 Email: info@creative-biomart.com  Fax: 1-631-938-8127

 45-1 Ramsey Road, Shirley, NY 11967, USA

Protein Array

Notes	Best use within three months from the date of receipt of this protein.
Storage	Store at -80 centigrade. Aliquot to avoid repeated freezing and thawing.
Storage Buffer	50 mM Tris-HCl, 10 mM reduced Glutathione, pH=8.0 in the elution buffer.

GENE INFORMATION

Gene Name	MYOZ1 myozenin 1 [Homo sapiens]
Official Symbol	MYOZ1
Synonyms	MYOZ1; myozenin 1; MYOZ, myozenin; myozenin-1; calsarcin 2; CS 2; FATZ; calsarcin-2; filamin-, actinin- and telethonin-binding protein; CS-2; MYOZ;
Gene ID	58529
mRNA Refseq	NM_021245
Protein Refseq	NP_067068
MIM	605603
UniProt ID	Q9NP98

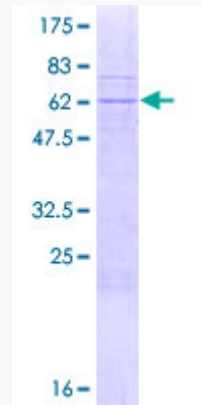
 Tel: 1-631-559-9269 1-516-512-3133

 Email: info@creative-biomart.com  Fax: 1-631-938-8127

 45-1 Ramsey Road, Shirley, NY 11967, USA

Quality Control

Testing:



12.5% SDS-PAGE Stained with Coomassie Blue.

 Tel: 1-631-559-9269 1-516-512-3133

 Email: info@creative-biomart.com  Fax: 1-631-938-8127

 45-1 Ramsey Road, Shirley, NY 11967, USA