

Recombinant Human MYPN Protein, His-tagged

Cat. No. MYPN-551H Lot. No. (See product label)

SPECIFICATION

Product Overview	Recombinant Human MYPN(Pro945~Leu1320) fused with His tag at N-terminal was expressed in E. coli.
Species	Human
Source	E.coli
ProteinLength	Pro945~Leu1320
Description	Striated muscle in vertebrates comprises large proteins which must be organized properly to contract efficiently. Z-lines in striated muscle are a sign of this organization, representing the ends of actin thin filaments, titin, nebulin or nebulin and accessory proteins required for structure and function. This gene encodes a protein which interacts with nebulin in skeletal muscle or nebulin in cardiac muscle and alpha-actinin. In addition, this gene product can interact with a protein with the I-band indicating it has a regulatory as well as structural function. Alternative splicing results in multiple transcript variants.
Form	PBS, pH7.4, containing 0.01% SKL, 1mM DTT, 5% Trehalose and Proclin300.
Molecular Mass	45.7kDa
Endotoxin	<1.0EU per 1g (determined by the LAL method)
Purity	> 95%

 Tel: 1-631-559-9269 1-516-512-3133

 Email: info@creative-biomart.com  Fax: 1-631-938-8127

 45-1 Ramsey Road, Shirley, NY 11967, USA

Applications	Positive Control; Immunogen; SDS-PAGE; WB. If bio-activity of the protein is needed, please check active protein.
Stability	The thermal stability is described by the loss rate. The loss rate was determined by accelerated thermal degradation test, that is, incubate the protein at 37 centigrade for 48h, and no obvious degradation and precipitation were observed. The loss rate is less than 5% within the expiration date under appropriate storage condition.
Storage	Avoid repeated freeze/thaw cycles. Store at 2-8 centigrade for one month. Aliquot and store at -80 centigrade for 12 months.
Reconstitution	Reconstitute in PBS or others.

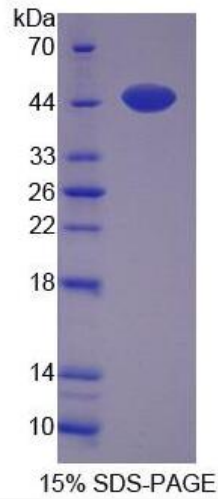
GENE INFORMATION

Gene Name	MYPN myopalladin [Homo sapiens]
Official Symbol	MYPN
Synonyms	MYPN; myopalladin; MYOP; sarcomeric protein myopalladin; 145 kDa; sarcomeric protein myopalladin, 145 kDa (MYOP);
Gene ID	84665
mRNA Refseq	NM_001256267
Protein Refseq	NP_001243196
MIM	608517
UniProt ID	Q86TC9

 Tel: 1-631-559-9269 1-516-512-3133

 Email: info@creative-biomart.com  Fax: 1-631-938-8127

 45-1 Ramsey Road, Shirley, NY 11967, USA



Tel: 1-631-559-9269 1-516-512-3133

Email: info@creative-biomart.com Fax: 1-631-938-8127

45-1 Ramsey Road, Shirley, NY 11967, USA