

## Recombinant Human MYPN Protein, GST-tagged

**Cat. No.** MYPN-5861H    **Lot. No.** (See product label)

### SPECIFICATION

<b>Product Overview</b>	Human MYPN partial ORF ( NP_115967, 61 a.a. - 170 a.a.) recombinant protein with GST-tag at N-terminal.
<b>Species</b>	Human
<b>Source</b>	Wheat Germ
<b>Description</b>	MYPN is a component of the sarcomere that tethers nebulin (MIM 161650) in skeletal muscle and nebulin (MIM 605491) in cardiac muscle to alpha-actinin (see ACTN2; MIM 102573) at the Z lines (Bang et al., 2001 [PubMed 11309420]).[supplied by OMIM
<b>Molecular Mass</b>	37.84 kDa
<b>AA Sequence</b>	PDLSAFLSQEELDESVNLRRLAINYDPLEKADETQARKRLSPDQMKHSPNLSFEPNF CQDNPRSPTSSKESPQEAKRPQYCSETQSKKVFLNKAADFIEELSSLFKSHSS
<b>Applications</b>	Enzyme-linked Immunoabsorbent Assay Western Blot (Recombinant protein) Antibody Production Protein Array
<b>Notes</b>	Best use within three months from the date of receipt of this protein.
<b>Storage</b>	Store at -80 centigrade. Aliquot to avoid repeated freezing and thawing.

 Tel: 1-631-559-9269    1-516-512-3133

 Email: [info@creative-biomart.com](mailto:info@creative-biomart.com)     Fax: 1-631-938-8127

 45-1 Ramsey Road, Shirley, NY 11967, USA

**Storage Buffer** 50 mM Tris-HCl, 10 mM reduced Glutathione, pH=8.0 in the elution buffer.

## GENE INFORMATION

**Gene Name** MYPN myopalladin [ Homo sapiens ]

**Official Symbol** MYPN

**Synonyms** MYPN; myopalladin; MYOP; sarcomeric protein myopalladin; 145 kDa; sarcomeric protein myopalladin, 145 kDa (MYOP);

**Gene ID** 84665

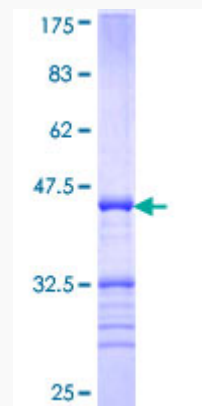
**mRNA Refseq** NM\_001256267

**Protein Refseq** NP\_001243196

**MIM** 608517

**UniProt ID** Q86TC9

**Quality Control Testing:**



 Tel: 1-631-559-9269 1-516-512-3133

 Email: [info@creative-biomart.com](mailto:info@creative-biomart.com)  Fax: 1-631-938-8127

 45-1 Ramsey Road, Shirley, NY 11967, USA



12.5% SDS-PAGE Stained with Coomassie Blue.

 Tel: 1-631-559-9269 1-516-512-3133

 Email: [info@creative-biomart.com](mailto:info@creative-biomart.com)  Fax: 1-631-938-8127

 45-1 Ramsey Road, Shirley, NY 11967, USA