

# Recombinant Active Human MYT1 Protein (Full length), N-His-tagged

Cat. No. MYT1-17H Lot. No. (See product label)

## SPECIFICATION

<b>Product Overview</b>	Recombinant full-length human MYT1 was expressed by baculovirus in Sf9 insect cells using an N-terminal His tag.
<b>Species</b>	Human
<b>Source</b>	Sf9 Cells
<b>ProteinLength</b>	Full length
<b>Description</b>	MYT1 is a member of a family of neural specific, zinc finger-containing DNA-binding proteins which binds to the promoter regions of proteolipid proteins of the central nervous system and plays a role in the developing nervous system. MYT1 of the oligodendrocyte lineage, along with a closely related CCHC zinc finger, is expressed in developing neurons in the mammalian central nervous system. The recombinant MYT1 fragments containing either the upstream 2 zinc fingers or the downstream 4 zinc fingers bound the same cis regulatory element in the PLP1 promoter in vitro and DNA binding required Zn (2+), but not other divalent cations.
<b>Bio-activity</b>	The specific activity of MYT1 was determined to be 14 nmol/min/mg as per activity assay protocol.
<b>Molecular Mass</b>	Observed MW: ~65 kDa. Calculated MW: ~58.7 kDa.

 Tel: 1-631-559-9269 1-516-512-3133

 Email: [info@creative-biomart.com](mailto:info@creative-biomart.com)  Fax: 1-631-938-8127

 45-1 Ramsey Road, Shirley, NY 11967, USA



<b>Purity</b>	The purity of MYT1 was determined to be > 90 % by densitometry.
<b>Stability</b>	One year at -70 centigrade from date of shipment.
<b>Storage</b>	Store product at -70 centigrade. For optimal storage, aliquot target into smaller quantities after centrifugation and store at recommended temperature. For most favorable performance, avoid repeated handling and multiple freeze/thaw cycles.
<b>Concentration</b>	0.1 µg/µL
<b>Storage Buffer</b>	Recombinant protein stored in 50mM sodium phosphate, pH 7.0, 300mM NaCl, 150mM imidazole, 0.25mM DTT, 25% glycerol.
<b>Shipping</b>	Dry ice

## GENE INFORMATION

<b>Gene Name</b>	PKMYT1 protein kinase, membrane associated tyrosine/threonine 1 [ Homo sapiens (human) ]
<b>Official Symbol</b>	MYT1
<b>Synonyms</b>	PKMYT1; protein kinase, membrane associated tyrosine/threonine 1; MYT1; PPP1R126; membrane-associated tyrosine- and threonine-specific cdc2-inhibitory kinase; myt1 kinase; protein phosphatase 1, regulatory subunit 126; EC 2.7.11.1
<b>Gene ID</b>	9088
<b>mRNA Refseq</b>	NM_004203
<b>Protein Refseq</b>	NP_004194

Tel: 1-631-559-9269 1-516-512-3133

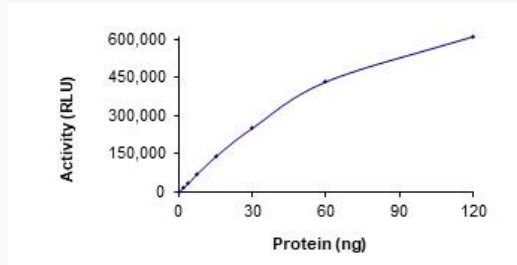
Email: [info@creative-biomart.com](mailto:info@creative-biomart.com) Fax: 1-631-938-8127

45-1 Ramsey Road, Shirley, NY 11967, USA

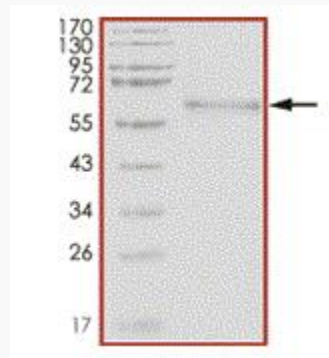
MIM 602474

UniProt ID Q99640

Activity



Purity



Tel: 1-631-559-9269 1-516-512-3133

Email: [info@creative-biomart.com](mailto:info@creative-biomart.com) Fax: 1-631-938-8127

45-1 Ramsey Road, Shirley, NY 11967, USA