

Recombinant Human MYT1 Protein, His-tagged

Cat. No. MYT1-3003H Lot. No. (See product label)

SPECIFICATION

Product Overview	Recombinant Human MYT1 Protein(134-522 aa), fused with His tag, was expressed in E.coli.
Species	Human
Source	E.coli
ProteinLength	134-522 aa
Form	The purified protein was Lyophilized from sterile PBS (58mM Na ₂ HPO ₄ , 17mM NaH ₂ PO ₄ , 68mM NaCl, pH7.4). 5 % trehalose and 5 % mannitol are added as protectant before lyophilization. The elution buffer contain 300mM imidazole.
Purity	90%, by SDS-PAGE with Coomassie Brilliant Blue staining.
Storage	Short-term storage: Store at 2-8°C for (1-2 weeks). Long-term storage: Aliquot and store at -20°C to -80°C for up to 3 months, buffer containing 50% glycerol is recommended for reconstitution. Avoid repeat freeze-thaw cycles.
Reconstitution	Reconstitute at 0.25 g/μl in 200 μl sterile water for short-term storage. Reconstitution with 200 μl 50% glycerol solution is recommended for longer term storage.

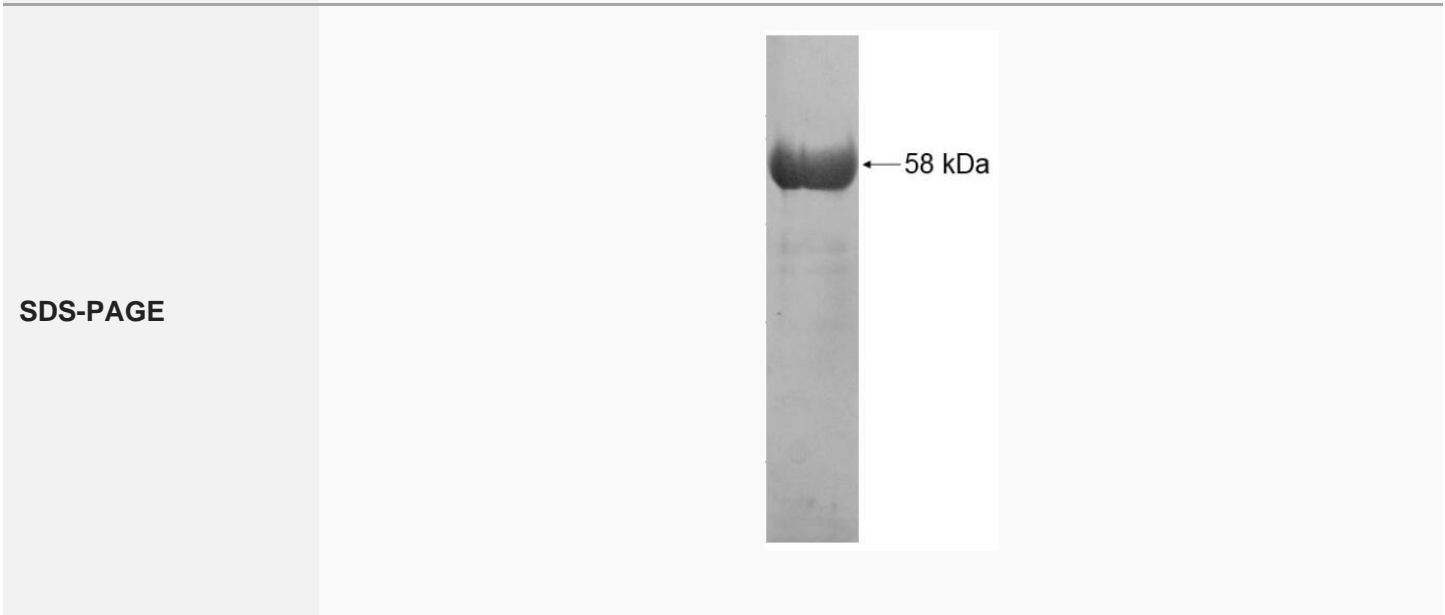
GENE INFORMATION

 Tel: 1-631-559-9269 1-516-512-3133

 Email: info@creative-biomart.com  Fax: 1-631-938-8127

 45-1 Ramsey Road, Shirley, NY 11967, USA

Gene Name	MYT1 myelin transcription factor 1 [Homo sapiens]
Official Symbol	MYT1
Synonyms	MYT1; myelin transcription factor 1; PLPB1; MTF1; MYTI; myelin transcription factor I; proteolipid protein binding protein; proteolipid protein-binding protein; C20orf36;
Gene ID	4661
mRNA Refseq	NM_004535
Protein Refseq	NP_004526
MIM	600379
UniProt ID	Q01538



Tel: 1-631-559-9269 1-516-512-3133

Email: info@creative-biomart.com Fax: 1-631-938-8127

45-1 Ramsey Road, Shirley, NY 11967, USA