

Recombinant Human MYT1 Protein, His-tagged

Cat. No. MYT1-3005H Lot. No. (See product label)

SPECIFICATION

Product Overview	Recombinant Human MYT1 Protein(His903~Val1121), fused with His tag, was expressed in E.coli.
Species	Human
Source	E.coli
ProteinLength	His903~Val1121
Form	PBS, pH7.4, containing 0.01% SKL, 5% Trehalose.
Molecular Mass	28kDa
Endotoxin	<1.0EU per 1g (determined by the LAL method)
Purity	> 90%
Storage	Avoid repeated freeze/thaw cycles. Store at 2-8°C for one month. Aliquot and store at -80°C for 12 months.
Reconstitution	Reconstitute in 10mM PBS (pH7.4) to a concentration of 0.1-1.0 mg/mL. Do not vortex.

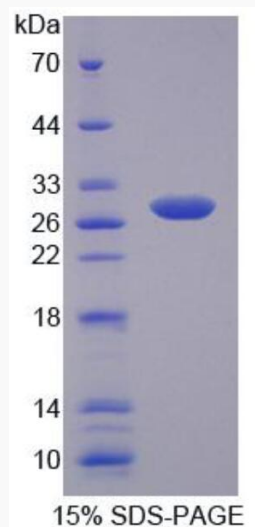
GENE INFORMATION

 Tel: 1-631-559-9269 1-516-512-3133

 Email: info@creative-biomart.com  Fax: 1-631-938-8127

 45-1 Ramsey Road, Shirley, NY 11967, USA

Gene Name	MYT1 myelin transcription factor 1 [Homo sapiens]
Official Symbol	MYT1
Synonyms	MYT1; myelin transcription factor 1; PLPB1; MTF1; MYTI; myelin transcription factor I; proteolipid protein binding protein; proteolipid protein-binding protein; C20orf36;
Gene ID	4661
mRNA Refseq	NM_004535
Protein Refseq	NP_004526
MIM	600379
UniProt ID	Q01538

SDS-PAGE


Tel: 1-631-559-9269 1-516-512-3133

Email: info@creative-biomart.com Fax: 1-631-938-8127

45-1 Ramsey Road, Shirley, NY 11967, USA