

Recombinant Human MYT1 Protein, GST-tagged

Cat. No. MYT1-5868H **Lot. No.** (See product label)

SPECIFICATION

Product Overview	Human MYT1 partial ORF (NP_004526, 586 a.a. - 685 a.a.) recombinant protein with GST-tag at N-terminal.
Species	Human
Source	Wheat Germ
Description	The protein encoded by this gene is a member of a family of neural specific, zinc finger-containing DNA-binding proteins. The protein binds to the promoter regions of proteolipid proteins of the central nervous system and plays a role in the developing nervous system. [provided by RefSeq
Molecular Mass	36.63 kDa
AA Sequence	DYASFDAQVFGKRMLAPKIQTSETSPKAFQCFDYSQDAEAAHMAATAILNLSTRCW EMPENLSTKPQDLPSKSVDIEVDENGLDLSMHKHRKRENAFPS
Applications	Enzyme-linked Immunoabsorbent Assay Western Blot (Recombinant protein) Antibody Production Protein Array
Notes	Best use within three months from the date of receipt of this protein.
Storage	Store at -80 centigrade. Aliquot to avoid repeated freezing and thawing.

 Tel: 1-631-559-9269 1-516-512-3133

 Email: info@creative-biomart.com  Fax: 1-631-938-8127

 45-1 Ramsey Road, Shirley, NY 11967, USA

Storage Buffer 50 mM Tris-HCl, 10 mM reduced Glutathione, pH=8.0 in the elution buffer.

GENE INFORMATION

Gene Name MYT1 myelin transcription factor 1 [Homo sapiens]

Official Symbol MYT1

Synonyms MYT1; myelin transcription factor 1; PLPB1; MTF1; MYTI; myelin transcription factor I; proteolipid protein binding protein; proteolipid protein-binding protein; C20orf36;

Gene ID 4661

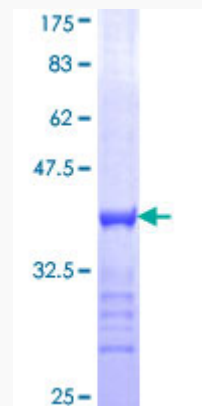
mRNA Refseq NM_004535

Protein Refseq NP_004526

MIM 600379

UniProt ID Q01538

Quality Control Testing:



 Tel: 1-631-559-9269 1-516-512-3133

 Email: info@creative-biomart.com  Fax: 1-631-938-8127

 45-1 Ramsey Road, Shirley, NY 11967, USA



12.5% SDS-PAGE Stained with Coomassie Blue.

 Tel: 1-631-559-9269 1-516-512-3133

 Email: info@creative-biomart.com  Fax: 1-631-938-8127

 45-1 Ramsey Road, Shirley, NY 11967, USA