

# Recombinant Human MZB1 Protein, Myc/DDK-tagged, C13 and N15-labeled

**Cat. No.** MZB1-4085H    **Lot. No.** (See product label)

## SPECIFICATION

<b>Product Overview</b>	MGC29506 MS Standard C13 and N15-labeled recombinant protein (NP_057543) with a C-terminal MYC/DDK tag, was expressed in HEK293 cells.
<b>Species</b>	Human
<b>Source</b>	HEK293
<b>Description</b>	Acts as a hormone-regulated adipokine/proinflammatory cytokine that is implicated in causing chronic inflammation, affecting cellular expansion and blunting insulin response in adipocytes. May have a role in the onset of insulin resistance.
<b>Molecular Mass</b>	20.7 kDa
<b>AA Sequence</b>	MRLSLPLLLLLLGAWAIPGGLGDRAPLTATAPQLDDEEMYSAHMPAHLRCDACRAV AYQMWQNLAKAETKLHTSNSSGGRRELSLVYTDVLDLRSCSRNWQDYGVREVDQV KRLTGPGLSEGPEPSISVMVTGGPWPTRLSRTCLHYLGEFGEDQIYEAHQQGRGAL EALLCGGPQGACSEKVSATREELTRTRPLEQKLISEEDLAANDILDYKDDDDKV
<b>Purity</b>	> 80% as determined by SDS-PAGE and Coomassie blue staining
<b>Stability</b>	Stable for 3 months from receipt of products under proper storage and handling conditions.
<b>Storage</b>	Store at -80 centigrade. Avoid repeated freeze-thaw cycles.

 Tel: 1-631-559-9269    1-516-512-3133

 Email: [info@creative-biomart.com](mailto:info@creative-biomart.com)     Fax: 1-631-938-8127

 45-1 Ramsey Road, Shirley, NY 11967, USA

**Concentration** 50 µg/mL as determined by BCA

**Storage Buffer** 100 mM glycine, 25 mM Tris-HCl, pH 7.3.

## GENE INFORMATION

**Gene Name** MZB1 marginal zone B and B1 cell-specific protein [ Homo sapiens (human) ]

**Official Symbol** MZB1

**Synonyms** MZB1; marginal zone B and B1 cell-specific protein; plasma cell-induced resident endoplasmic reticulum protein; HSPC190; caspase-2 binding protein; plasma cell-induced ER protein 1; proapoptotic caspase adapter protein; proapoptotic caspase adaptor protein; plasma cell-induced resident ER protein; PACAP; pERp1; FLJ32987; MGC29506;

**Gene ID** 51237

**mRNA Refseq** NM\_016459

**Protein Refseq** NP\_057543

**MIM** 609447

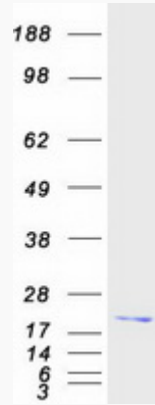
**UniProt ID** Q8WU39

 Tel: 1-631-559-9269 1-516-512-3133

 Email: [info@creative-biomart.com](mailto:info@creative-biomart.com)  Fax: 1-631-938-8127

 45-1 Ramsey Road, Shirley, NY 11967, USA

SDS-PAGE



 Tel: 1-631-559-9269 1-516-512-3133

 Email: [info@creative-biomart.com](mailto:info@creative-biomart.com)  Fax: 1-631-938-8127

 45-1 Ramsey Road, Shirley, NY 11967, USA