

Active Recombinant Mouse Manf protein

Cat. No. Manf-187M Lot. No. (See product label)

SPECIFICATION

Product Overview	Active Recombinant Mouse Manf protein(Q9CXI5)(22-179) was expressed in E.coli.
Species	Mouse
Source	E.coli
ProteinLength	22-179
Form	Lyophilized from a 0.2 µm filtered concentrated solution in PBS, pH 7.4.
Bio-activity	Fully biologically active when compared to standard. The ED50 as determined by a cell proliferation assay using rat C6 cells is less than 10 µg/ml, corresponding to a specific activity of > 100 IU/mg.
Molecular Mass	Approximately 18.2 kDa, a single non-glycosylated polypeptide chain containing 158 amino acids.
AASequence	LRPGDCEVCI SYLGRFYQDL KDRDVTFSFA TIEEELIKFC REARGKENRL CYYIGATDDA ATKIINEVSK PLAAHHPVEK ICEKLKKKDS QICELKYDNQ IDLSTVDLKK LRVKELKKIL DDWGEMCKGC AEKSDYIRKI NELMPKYAPK AASARTDL
Endotoxin	Less than 0.1 EU/g of rMuMANF as determined by LAL method.
Purity	>98% by SDS-PAGE and HPLC analyses.

 Tel: 1-631-559-9269 1-516-512-3133

 Email: info@creative-biomart.com  Fax: 1-631-938-8127

 45-1 Ramsey Road, Shirley, NY 11967, USA

Storage

Use a manual defrost freezer and avoid repeated freeze-thaw cycles. - 12 months from date of receipt, -20 to -70 °C as supplied. - 1 month, 2 to 8 °C under sterile conditions after reconstitution. - 3 months, -20 to -70 °C under sterile conditions after reconstitution.

Reconstitution

We recommend that this vial be briefly centrifuged prior to opening to bring the contents to the bottom. Reconstitute in sterile distilled water or aqueous buffer containing 0.1 % BSA to a concentration of 0.1-1.0 mg/mL. Stock solutions should be apportioned into working aliquots and stored at ≤ -20 °C. Further dilutions should be made in appropriate buffered solutions.

GENE INFORMATION**Gene Name**

[Manf mesencephalic astrocyte-derived neurotrophic factor \[Mus musculus \]](#)

Official Symbol

[Manf](#)

Synonyms

MANF; mesencephalic astrocyte-derived neurotrophic factor; arginine-rich protein; arginine-rich, mutated in early stage tumors; Armet; D17914; AA407711; AA408789; AA673178; D18Mgi17; 3230402M22Rik;

Gene ID

[74840](#)

mRNA Refseq

[NM_029103](#)

Protein Refseq

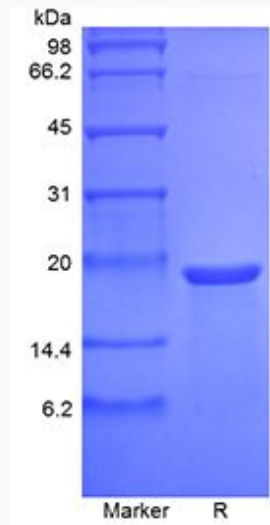
[NP_083379](#)

 Tel: 1-631-559-9269 1-516-512-3133

 Email: info@creative-biomart.com  Fax: 1-631-938-8127

 45-1 Ramsey Road, Shirley, NY 11967, USA

SDS-PAGE



 Tel: 1-631-559-9269 1-516-512-3133

 Email: info@creative-biomart.com  Fax: 1-631-938-8127

 45-1 Ramsey Road, Shirley, NY 11967, USA