

Recombinant Mouse Map1lc3b Protein, His-tagged

Cat. No. Map1lc3b-221M **Lot. No.** (See product label)

SPECIFICATION

Product Overview	Recombinant Mouse Map1lc3b(1-120aa) fused with His tag at N-terminal was expressed in E. coli.
Species	Mouse
Source	E.coli
ProteinLength	1-120aa
Description	Map1lc3b, also known as Microtubule-associated proteins 1A/1B light chain 3B, belongs to the MAP1 LC3 family. It is a subunit of neuronal microtubule-associated MAP1A and MAP1B proteins, which are involved in microtubule assembly and important for neurogenesis. Map1lc3b may also be involved in formation of autophagosomal vacuoles. It is expressed primarily in heart, testis, brain and skeletal muscle.
Form	Liquid. In 20mM MES(pH6.0) containing 0.1M NaCl, 1mM DTT, 30% glycerol
Molecular Mass	16.7 kDa (144aa) Confirmed by MALDI-TOF
AA Sequence	MGSSHHHHHH SSGLVPRGSH MGSHPSEKT FKQRRSFEQR VEDVRLIREQ HPTKIPVIEE RYKGEKQLPV LDKTKFLVPD HVNMSELIKI IRRRLQLNAN QAFFLLVNGH SMVSVSTPIS EVYESERDED GFLYMVYASQ ETFG
Purity	> 95% by SDS - PAGE

 Tel: 1-631-559-9269 1-516-512-3133

 Email: info@creative-biomart.com  Fax: 1-631-938-8127

 45-1 Ramsey Road, Shirley, NY 11967, USA

Applications	SDS-PAGE
Storage	Can be stored at +4 centigrade short term (1-2 weeks). For long term storage, aliquot and store at -20 centigrade or -70 centigrade. Avoid repeated freezing and thawing cycles.
Concentration	0.25 mg/ml (determined by Absorbance at 280nm)

GENE INFORMATION

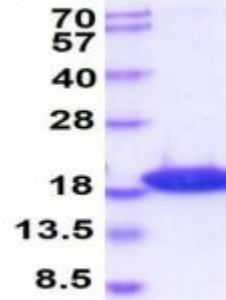
Gene Name	Map1lc3b microtubule-associated protein 1 light chain 3 beta [<i>Mus musculus</i>]
Official Symbol	Map1lc3b
Synonyms	MAP1LC3B; microtubule-associated protein 1 light chain 3 beta; microtubule-associated proteins 1A/1B light chain 3B; MAP1A/MAP1B LC3 B; MAP1A/MAP1B light chain 3 B; autophagy-related protein LC3 B; MAP1 light chain 3-like protein 2; autophagy-related ubiquitin-like modifier LC3 B; Atg8; LC3b; Map1lc3; 1010001C15Rik; MGC118046;
Gene ID	67443
mRNA Refseq	NM_026160
Protein Refseq	NP_080436
UniProt ID	Q9CQV6

 Tel: 1-631-559-9269 1-516-512-3133

 Email: info@creative-biomart.com  Fax: 1-631-938-8127

 45-1 Ramsey Road, Shirley, NY 11967, USA

(kDa)



15% SDS-PAGE (3 μ g)

 Tel: 1-631-559-9269 1-516-512-3133

 Email: info@creative-biomart.com  Fax: 1-631-938-8127

 45-1 Ramsey Road, Shirley, NY 11967, USA