

Recombinant Mouse Map6 protein, His & T7-tagged

Cat. No. Map6-6828M Lot. No. (See product label)

SPECIFICATION

Product Overview	Recombinant Mouse Map6 aa. (Gln177~Glu387 (Accession # Q7TSJ2)) fused with N-terminal His & T7 tag was produced in E. coli cells.
Species	Mouse
Source	E.coli
ProteinLength	Gln177~Glu387
Form	Freeze-dried powder
Molecular Mass	Predicted Molecular Mass: 26.0kDa.
Endotoxin	<1.0EU per 1ug (determined by the LAL method)
Purity	>95%
Characteristic	The isoelectric point is 10.
Applications	SDS-PAGE; WB; ELISA; IP.
Stability	The thermal stability is described by the loss rate of the target protein. The loss rate was determined by accelerated thermal degradation test, that is, incubate the protein at 37°C for 48h, and no obvious degradation and precipitation were observed. (Referring from China Biological Products Standard, which was calculated by the

 Tel: 1-631-559-9269 1-516-512-3133

 Email: info@creative-biomart.com  Fax: 1-631-938-8127

 45-1 Ramsey Road, Shirley, NY 11967, USA

Arrhenius equation.) The loss of this protein is less than 5% within the expiration date under appropriate storage condition.

Storage

Avoid repeated freeze/thaw cycles. Store at 2-8°C for one month. Aliquot and store at -80°C for 12 months.

Storage buffer

Supplied as lyophilized form in PBS, pH7.4, containing 5% sucrose, 0.01% sarcosyl.

Reconstitution

Reconstitute in sterile PBS, pH7.2-pH7.4.

GENE INFORMATION

Gene Name

Map6 microtubule-associated protein 6 [*Mus musculus* (house mouse)]

Official Symbol

Map6

Synonyms

STOP; Map-6; Mtap6; 2810411E12Rik; stable tubule-only polypeptide; microtubule-associated protein 6

Gene ID

17760

mRNA Refseq

NM_001043355.2

Protein Refseq

NP_001036820.2

UniProt ID

Q7TSJ2

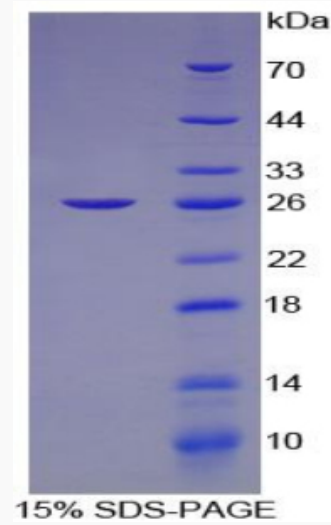
 Tel: 1-631-559-9269 1-516-512-3133

 Email: info@creative-biomart.com  Fax: 1-631-938-8127

 45-1 Ramsey Road, Shirley, NY 11967, USA



SDS-PAGE



Tel: 1-631-559-9269 1-516-512-3133

Email: info@creative-biomart.com Fax: 1-631-938-8127

45-1 Ramsey Road, Shirley, NY 11967, USA