

## Recombinant Rat Mapk14 Protein, His-tagged

**Cat. No.** Mapk14-1762R    **Lot. No.** (See product label)

### SPECIFICATION

<b>Product Overview</b>	Recombinant Rat Mapk14 Protein (Glu19-Pro279) with N-His tag was expressed in E. coli.
<b>Species</b>	Rat
<b>Source</b>	E.coli
<b>ProteinLength</b>	Glu19-Pro279
<b>Description</b>	Enables ATP binding activity; MAP kinase activity; and protein C-terminus binding activity. Involved in several processes, including protein autophosphorylation; response to glucose; and stress-activated MAPK cascade. Located in cytosol and nucleus. Used to study diabetic neuropathy and osteoporosis. Biomarker of Alzheimer's disease and anti-basement membrane glomerulonephritis. Orthologous to human MAPK14 (mitogen-activated protein kinase 14).
<b>Form</b>	Freeze-dried powder
<b>Molecular Mass</b>	Predicted Molecular Mass: 33.4 kDa Accurate Molecular Mass: 32 kDa
<b>Purity</b>	> 90%
<b>Applications</b>	Positive Control; Immunogen; SDS-PAGE; WB.

 Tel: 1-631-559-9269    1-516-512-3133

 Email: [info@creative-biomart.com](mailto:info@creative-biomart.com)     Fax: 1-631-938-8127

 45-1 Ramsey Road, Shirley, NY 11967, USA

<b>Stability</b>	The thermal stability is described by the loss rate. The loss rate was determined by accelerated thermal degradation test, that is, incubate the protein at 37 centigrade for 48h, and no obvious degradation and precipitation were observed. The loss rate is less than 5% within the expiration date under appropriate storage condition.
<b>Storage</b>	Avoid repeated freeze/thaw cycles. Store at 2-8 centigrade for one month. Aliquot and store at -80 centigrade for 12 months.
<b>Storage Buffer</b>	PBS, pH7.4, containing 0.01% SKL, 1mM DTT, 5% Trehalose and Proclin300.
<b>Reconstitution</b>	Reconstitute in 10mM PBS (pH7.4) to a concentration of 0.1-1.0 mg/mL. Do not vortex.
<b>GENE INFORMATION</b>	
<b>Gene Name</b>	Mapk14 mitogen activated protein kinase 14 [ <i>Rattus norvegicus</i> (Norway rat) ]
<b>Official Symbol</b>	Mapk14
<b>Synonyms</b>	MAPK14; mitogen activated protein kinase 14; mitogen-activated protein kinase 14; MAPK 14; MAP kinase 2; MAP kinase 14; p38alpha Exip; p38 MAP kinase; MAP kinase Mxi2; reactive kinase; MAP kinase p38 alpha; Csaids binding protein; MAX-interacting protein 2; stress-activated protein kinase 2A; mitogen-activated protein kinase 14A; p38 mitogen activated protein kinase; mitogen-activated protein kinase p38 alpha; cytokine-suppressive anti-inflammatory drug binding protein; cytokine suppressive anti-inflammatory drug binding protein; RK; Hog; p38; CRK1; CSBP; Exip; Mxi2; CSPB1; Cspb1; Cspb2; Prkm14; Prkm15; Sapk2A; p38Hog; p38alpha; MGC105413;
<b>Gene ID</b>	81649

 Tel: 1-631-559-9269 1-516-512-3133

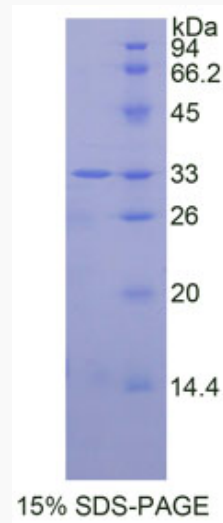
 Email: [info@creative-biomart.com](mailto:info@creative-biomart.com)  Fax: 1-631-938-8127

 45-1 Ramsey Road, Shirley, NY 11967, USA

mRNA Refseq [NM\\_031020](#)

Protein Refseq [NP\\_112282](#)

UniProt ID [Q56A33](#)



 Tel: 1-631-559-9269 1-516-512-3133

 Email: [info@creative-biomart.com](mailto:info@creative-biomart.com)  Fax: 1-631-938-8127

 45-1 Ramsey Road, Shirley, NY 11967, USA