

Recombinant Mouse Mapk14 protein, His&Myc-tagged

Cat. No. Mapk14-7876M Lot. No. (See product label)

SPECIFICATION

Product Overview	Recombinant Mouse Mapk14 protein(P47811)(2-360aa), fused with N-terminal His tag and C-terminal Myc tag, was expressed in E.coli.
Species	Mouse
Source	E.coli
ProteinLength	2-360aa
Form	If the delivery form is liquid, the default storage buffer is Tris/PBS-based buffer, 5%-50% glycerol. If the delivery form is lyophilized powder, the buffer before lyophilization is Tris/PBS-based buffer, 6% Trehalose, pH 8.0.
Molecular Mass	48.6 kDa
Purity	Greater than 90% as determined by SDS-PAGE.
Storage	Store at -20°C/-80°C upon receipt, aliquoting is necessary for mutiple use. Avoid repeated freeze-thaw cycles.
Reconstitution	We recommend that this vial be briefly centrifuged prior to opening to bring the contents to the bottom. Please reconstitute protein in deionized sterile water to a concentration of 0.1-1.0 mg/mL. We recommend to add 5-50% of glycerol (final concentration) and aliquot for long-term storage at -20°C/-80°C.

 Tel: 1-631-559-9269 1-516-512-3133

 Email: info@creative-biomart.com  Fax: 1-631-938-8127

 45-1 Ramsey Road, Shirley, NY 11967, USA

AA Sequence

SQERPTFYRQELNKTIWEVPERYQNLSPVGSAYGSVCAAFDTKTGHRVAVKKLSR
 PFQSIHAKRTYRELRLKHKHENVIGLLDVFTPARSLEEFNDVYLVTHLMGADLNNI
 VKCQKLTDDHVQFLIYQILRGLKYIHSADIIHRDLKPSNLAVNEDCELKILDFGLARHTD
 DEMTGIVATRWRAP EIMLNWMHYNQTVDIWSVGCIMAELLTGRTLFPGTDHIDQL
 KLILRLVGTPGAELLKKISSESARNYIQSLAQMPKMN FANVFIGANPLAVDLLEKMLVL
 DSDKRITAAQALAHAYFAQYHDPDDEPVADPYDQSFESRDLLIDEWKSLTYDEVISF
 VPPPLDQEEMES

GENE INFORMATION

Gene Name

Mapk14 mitogen-activated protein kinase 14 [*Mus musculus*]

Official Symbol

Mapk14

Synonyms

MAPK14; mitogen-activated protein kinase 14; MAPK 14; p38 MAPK; p38 alpha;
 MAP kinase 14; MAP kinase p38 alpha; p38 MAP kinase alpha; tRNA synthetase
 cofactor p38; mitogen activated protein kinase 14; mitogen-activated protein kinase
 p38 alpha; cytokine suppressive anti-inflammatory drug binding protein 1; p38; Crk1;
 Mxi2; p38a; CSBP2; Csbp1; PRKM14; PRKM15; p38MAPK; p38alpha; p38-alpha;
 MGC102436;

Gene ID

26416

mRNA Refseq

NM_001168508

Protein Refseq

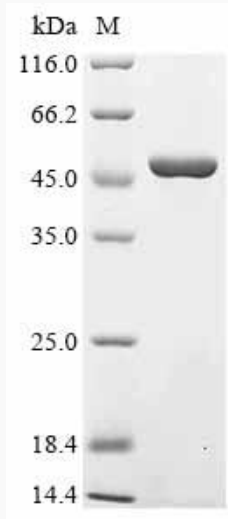
NP_001161980

 Tel: 1-631-559-9269 1-516-512-3133

 Email: info@creative-biomart.com  Fax: 1-631-938-8127

 45-1 Ramsey Road, Shirley, NY 11967, USA

SDS-PAGE



 Tel: 1-631-559-9269 1-516-512-3133

 Email: info@creative-biomart.com  Fax: 1-631-938-8127

 45-1 Ramsey Road, Shirley, NY 11967, USA