

Recombinant Mouse Mapt protein, His-tagged

Cat. No. Mapt-19M Lot. No. (See product label)

SPECIFICATION

Product Overview	Recombinant Mouse Mapt(Ala92~Val400) fused with 10-his tag at C-terminal was expressed in E. coli.
Species	Mouse
Source	E.coli
ProteinLength	92-400 a.a.
Form	20mM Tris, 150mM NaCl,pH8.0, containing 1mM EDTA, 1mM DTT, 0.01% SKL, 5% Trehalose and Proclin300.
Molecular Mass	Predicted Molecular Mass: 36.0kDa; Accurate Molecular Mass: 44kDa
Endotoxin	<1.0EU per 1g (determined by the LAL method)
Purity	> 95%
Applications	Positive Control; Immunogen; SDS-PAGE; WB. If bio-activity of the protein is needed, please check active protein.
Stability	The thermal stability is described by the loss rate. The loss rate was determined by accelerated thermal degradation test, that is, incubate the protein at 37 centigrade for 48h, and no obvious degradation and precipitation were observed.

 Tel: 1-631-559-9269 1-516-512-3133

 Email: info@creative-biomart.com  Fax: 1-631-938-8127

 45-1 Ramsey Road, Shirley, NY 11967, USA

Storage Avoid repeated freeze/thaw cycles. Store at 2-8 centigrade for one month. Aliquot and store at -80 centigrade for 12 months.

Reconstitution Reconstitute in 20mM Tris, 150mM NaCl (pH8.0) to a concentration of 0.1-1.0 mg/mL. Do not vortex.

GENE INFORMATION

Gene Name [Mapt microtubule-associated protein tau \[Mus musculus \]](#)

Official Symbol [Mapt](#)

Synonyms MAPT; microtubule-associated protein tau; PHF-tau; paired helical filament-tau; neurofibrillary tangle protein; Tau; Mtapt; AI413597; AW045860;

Gene ID [17762](#)

mRNA Refseq [NM_001038609](#)

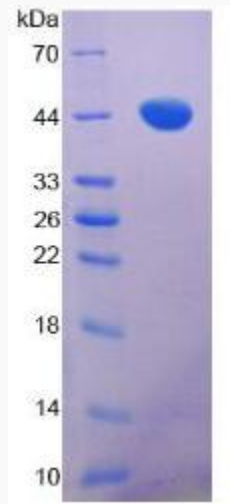
Protein Refseq [NP_001033698](#)

UniProt ID [P10637](#)

 Tel: 1-631-559-9269 1-516-512-3133

 Email: info@creative-biomart.com  Fax: 1-631-938-8127

 45-1 Ramsey Road, Shirley, NY 11967, USA



Tel: 1-631-559-9269 1-516-512-3133

Email: info@creative-biomart.com Fax: 1-631-938-8127

45-1 Ramsey Road, Shirley, NY 11967, USA