

Recombinant Rat Mapt protein(2-752aa), His-tagged

Cat. No. Mapt-2928R Lot. No. (See product label)

SPECIFICATION

Product Overview	Recombinant Rat Mapt protein(P19332)(2-752aa), fused with N-terminal His tag, was expressed in HEK293.
Species	Rat
Source	HEK293
ProteinLength	2-752aa
Form	Lyophilized from a 0.2 µm filtered 20 mM Tris-HCl, 0.5 M NaCl, 6% Trehalose, pH 8.0
Bio-activity	Measured by its binding ability in a functional ELISA. Immobilized Rat Mapt at 2 µg/ml can bind anti-MAPT recombinant antibody, the EC50 is 136.2-238.9 ng/mL.
Molecular Mass	81.2 kDa
Endotoxin	Less than 1.0 EU/ug as determined by LAL method.
Purity	Greater than 95% as determined by SDS-PAGE.
Storage	Store at -20°C/-80°C upon receipt, aliquoting is necessary for mutiple use. Avoid repeated freeze-thaw cycles.
Reconstitution	We recommend that this vial be briefly centrifuged prior to opening to bring the contents to the bottom. Please reconstitute protein in deionized sterile water to a

 Tel: 1-631-559-9269 1-516-512-3133

 Email: info@creative-biomart.com  Fax: 1-631-938-8127

 45-1 Ramsey Road, Shirley, NY 11967, USA

concentration of 0.1-1.0 mg/mL. We recommend to add 5-50% of glycerol (final concentration) and aliquot for long-term storage at -20°C/-80°C.

AA Sequence

AEPRQEFDTMEDQAGDYTMLQDQEGDMDHGLKESPPQPPADDGSEEPGSETSDA
 KSTPTAEDVTAPLVEERAPDKQATAQSHTEIPEGTTAEEAGIGDTPNMEDQAAGHVT
 QEPQKVEIFSQSLLVEPGRREGQAPDSGISDWITHQQVPSMSGAPLPPQGLREATH
 QPLGTRPEDVERSHPASELLWQESPQKEAWGKDRLGSEEEVDEDITMDESSQESP
 PSQASLAPGTATPQARSVSASGVSGETTSIPGFPAEGSIPLPADFFSKVSAETQASP
 PEGPGTGPSEEGHEAAPEFTFHVEIKASAPKEQDLEGATVVGAPAEQKARGPSVG
 KGTKEASLLEPTDKQPAAGLPGRPVSVPQLKARVAGVSKDRTGNDEKKAKTSTPS
 CAKTPSNRPCLSPTRPTPGSSDPLIKSSPAVCPEPATSPKYVSSVTPRNGSPGTKQ
 MKLKGADGKTGAKIATPRGAATPGQKGTSNATRIPAKTTPSPKTPPGSGEPPKSGE
 RSGYSSPGSPGTPGSRSRTPSLPTPPTREPKKVAVVRTPPKSPSASKSRLQTAPVP
 MPDLKNVRSKIGSTENLKHQPGGGKVIINKLDSLNVQSKCGSKDNIKHVPGGGSV
 HIVYKPVDLKVTSKCGSLGNIHHKPGGGQVEVKSEKLDKDRVQSKIGSLDNITHV
 PGGGNKKIETHKLTFRENAKAKTDHGAEIVYKSPVVSGDTSRHLNSVSTGSIDMV
 DSPQLATLADEVASLAKQGL

GENE INFORMATION

Gene Name [Mapt microtubule-associated protein tau \[Rattus norvegicus \]](#)

Official Symbol [Mapt](#)

Synonyms MAPT; microtubule-associated protein tau; PHF-tau; paired helical filament-tau; neurofibrillary tangle protein; Tau microtubule-associated protein; pTau; Mtapt; RNPTAU; MGC156663;

Gene ID [29477](#)

 Tel: 1-631-559-9269 1-516-512-3133

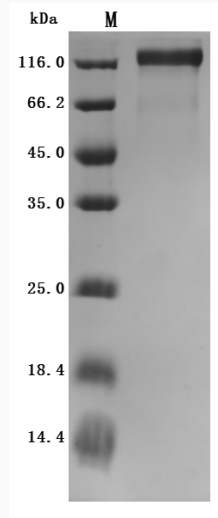
 Email: info@creative-biomart.com  Fax: 1-631-938-8127

 45-1 Ramsey Road, Shirley, NY 11967, USA

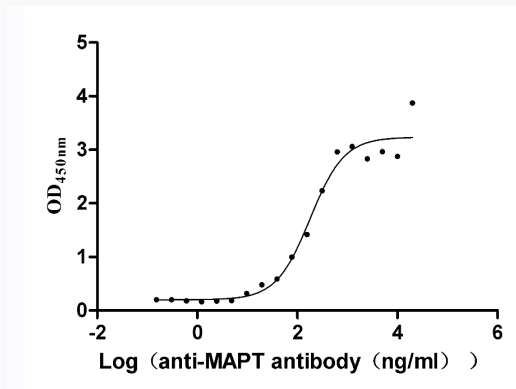
mRNA Refseq [NM_017212](#)

Protein Refseq [NP_058908](#)

SDS-PAGE



Activity



 Tel: 1-631-559-9269 1-516-512-3133

 Email: info@creative-biomart.com  Fax: 1-631-938-8127

 45-1 Ramsey Road, Shirley, NY 11967, USA