

Recombinant Mouse Mapt protein(2-733aa), His-tagged

Cat. No. Mapt-3222M Lot. No. (See product label)

SPECIFICATION

Product Overview	Recombinant Mouse Mapt protein(P10637)(2-733aa), fused with N-terminal His tag, was expressed in HEK293.
Species	Mouse
Source	HEK293
ProteinLength	2-733aa
Form	Lyophilized from a 0.2 µm filtered 20 mM Tris-HCl, 0.5 M NaCl, 6% Trehalose, pH 8.0
Bio-activity	Measured by its binding ability in a functional ELISA. Immobilized Mouse Mapt at 2 µg/mL can bind anti-MAPT recombinant antibody, the EC50 is 436.1-518.6 ng/mL.
Molecular Mass	78.9 kDa
Endotoxin	Less than 1.0 EU/ug as determined by LAL method.
Purity	Greater than 90% as determined by SDS-PAGE. Greater than 90% as determined by SEC-HPLC.
Storage	Store at -20°C/-80°C upon receipt, aliquoting is necessary for mutiple use. Avoid repeated freeze-thaw cycles.
Reconstitution	We recommend that this vial be briefly centrifuged prior to opening to bring the

 Tel: 1-631-559-9269 1-516-512-3133

 Email: info@creative-biomart.com  Fax: 1-631-938-8127

 45-1 Ramsey Road, Shirley, NY 11967, USA

contents to the bottom. Please reconstitute protein in deionized sterile water to a concentration of 0.1-1.0 mg/mL. We recommend to add 5-50% of glycerol (final concentration) and aliquot for long-term storage at -20°C/-80°C.

AA Sequence

ADPRQEFDTMEDHAGDYLLQDQEGDMDHGLKESPPQPPADDGAEPEGSETSDA
 KSTPTAEDVTAPLVDERAPDKQAAAQPHEIPEGITAEAEAGIGDTPNQEDQAAGHVT
 QGRREGQAPDLGTSWTRQQVSSMSGAPLLPQGLREATCQPSGTRPEDIEKSHA
 SELLRRGPPQKEGWGQDRLGSEEEVDEDLTVDESSQDSPPSQASLTPGRAAPQAG
 SGSVCGETASVPLPTEGSVPLPADFFSKVSAETQASQPEGPGTGPMEEGHEAAP
 EFTFHVEIKASTPKEQDLEGATVVGVPGEEQKAQTQGSPVSGKGTKEASLQEPGKQ
 PAAGLPGRPVS RVPQLKARVASKDRTGNDEKKAKTSTPSCAKAPSHRCLSPTRPT
 LGSSDPLIKPSSPAVSPEPATSPKHVSSVTPRNGSPGTKQMMLKGADGKTGAKIATP
 RGAASPAQKGTSNATRIPAKTTPSPKTPPGSGEPPKSGERSGYSSPGSPGTPGSRS
 RTPSLPTPTREPKKVAVVRTPPKSPSASKSRLQTAPVMPDLKNVRSKIGSTENLK
 HQPGGGKVQIINKKLDLSNVQSKCGSKDNIKHVPGGGSVQIVYKPV DLSKVTSKCGS
 LGNIHHKPGGGQVEVKSEKLDKDRVQSKIGSLDNITHVPGGGNKKIETHKLTREN
 AKAKTDHGAEIVYKSPVVS GDTSPRHLSNVSSSTGSIDMVDSPQLATLADEV SASLAK
 QGL

GENE INFORMATION

Gene Name [Mapt microtubule-associated protein tau \[Mus musculus \]](#)

Official Symbol [Mapt](#)

Synonyms MAPT; microtubule-associated protein tau; PHF-tau; paired helical filament-tau; neurofibrillary tangle protein; Tau; Mtapt; AI413597; AW045860;

Gene ID [17762](#)

 Tel: 1-631-559-9269 1-516-512-3133

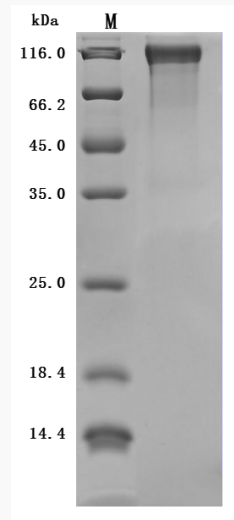
 Email: info@creative-biomart.com  Fax: 1-631-938-8127

 45-1 Ramsey Road, Shirley, NY 11967, USA

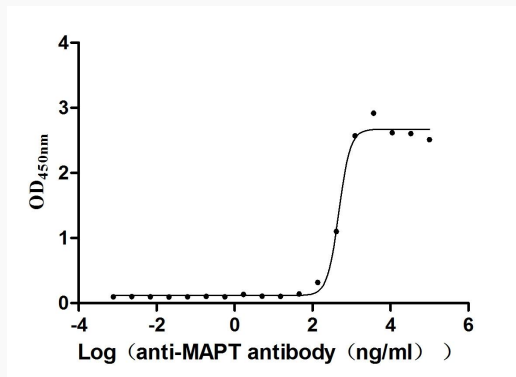
mRNA Refseq [NM_001038609](#)

Protein Refseq [NP_001033698](#)

SDS-PAGE



Activity



 Tel: 1-631-559-9269 1-516-512-3133

 Email: info@creative-biomart.com  Fax: 1-631-938-8127

 45-1 Ramsey Road, Shirley, NY 11967, USA