

Recombinant Mouse Masp2 protein, His-Myc-tagged

Cat. No. Masp2-4526M Lot. No. (See product label)

SPECIFICATION

Product Overview	Recombinant Mouse Masp2 protein(Q91WP0)(20-685 aa), fused with N-terminal His tag and C-terminal Myc tag, was expressed in Mammalian Cells.
Species	Mouse
Source	Mammalian Cells
ProteinLength	20-685 aa
Form	For liquid formulations, the standard storage buffer consists of a Tris or PBS based solution supplemented with 5-50% glycerol. When provided as lyophilized powder, the product undergoes freeze-drying from a Tris- or PBS-based formulation containing 6% trehalose, adjusted to pH 8.0 prior to the lyophilization process.
Molecular Mass	80.0 kDa
AASequence	SKWPEPVFGRLVSPGFPEKYADHQDRSWTLTAPPGYRLRLYFTHFDLELSYRCEYD FVKLSSGTKVLATLCGQESTDTEQAPGNDFYSLGPSLKVTFHSDYSNEKPFTGFEA FYAAEDVDECRVSLGDSVPCDHCHNYLGGYYCSCRAGYVLHQNKHTCSALCSGQ VFTGRSGYLSSPEYPQPYPKLSSCTYSIRLEDGFSVILDFVESFDVETHPEAQCPYD SLKIQTDKGEHGPFCKGKTLPPRIETDSHKVTITFATDESGNHTGWKIHYTSTARPCPD PTAPPNGSISPVQAIYVLKDRFSVFCKTGFEQLQGSVPLKSFTAVCQKDGSWDRPM PECSIIDCGPPDDLNGHVVDYITGPEVTTYKAVIQYSCEETFYTMSSNGKYVCEADG FWTSSKGEKLPVCEPVCGLSTHTIGGRIVGGQPAKPGDFPWQVLLLGQTTAAAGA LIHDNWVLTAHAVYEKRMMASSLNIRMGILKRLSPHYTQAWPEEIFIHEGYTHGAGF

 Tel: 1-631-559-9269 1-516-512-3133

 Email: info@creative-biomart.com  Fax: 1-631-938-8127

 45-1 Ramsey Road, Shirley, NY 11967, USA

DNDIALIKLKNKVTINGSIMPVCLPRKEAASLMRTDFTGTVAGWGLTQKGLLARNLMF
 VDIPIADHQKCTAVYEKLYPGVRVSNMLCAGLETGGKDSCRGDSSGGALVFLDNET
 QRWFVGGIVSWGSSINCGAADQYGVYTKVINIYIPWIENIISNF

Purity Greater than 85% as determined by SDS-PAGE.

Storage Store at -20°C/-80°C upon receipt, aliquoting is necessary for mutiple use. Avoid repeated freeze-thaw cycles.

Reconstitution Please reconstitute protein indeionized sterile water to a concentration of 0.1-1.0 mg/mL. Aliquot for long-term storage at -80°C.

GENE INFORMATION

Gene Name [Masp2 mannan-binding lectin serine peptidase 2 \[Mus musculus \]](#)

Official Symbol [Masp2](#)

Synonyms MASP2; mannan-binding lectin serine peptidase 2; mannan-binding lectin serine protease 2; MBL-associated serine protease 2; mannose-binding protein-associated serine protease 2; MAp19; MASP-2;

Gene ID [17175](#)

mRNA Refseq [NM_001003893](#)

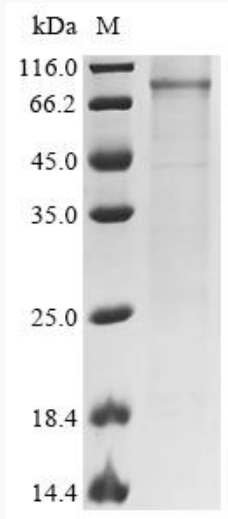
Protein Refseq [NP_001003893](#)

 Tel: 1-631-559-9269 1-516-512-3133

 Email: info@creative-biomart.com  Fax: 1-631-938-8127

 45-1 Ramsey Road, Shirley, NY 11967, USA

SDS-PAGE



 Tel: 1-631-559-9269 1-516-512-3133

 Email: info@creative-biomart.com  Fax: 1-631-938-8127

 45-1 Ramsey Road, Shirley, NY 11967, USA