

Recombinant Rat Masp2 protein(20-685aa), His-tagged

Cat. No. Masp2-4876R Lot. No. (See product label)

SPECIFICATION

Product Overview	Recombinant Rat Masp2 protein(Q9JJS8)(20-685aa), fused with C-terminal His tag, was expressed in HEK293.
Species	Rat
Source	HEK293
ProteinLength	20-685aa
Form	If the delivery form is liquid, the default storage buffer is Tris/PBS-based buffer, 5%-50% glycerol. If the delivery form is lyophilized powder, the buffer before lyophilization is Tris/PBS-based buffer, 6% Trehalose, pH 8.0.
Molecular Mass	76.4 kDa
Purity	Greater than 85% as determined by SDS-PAGE.
Storage	Store at -20°C/-80°C upon receipt, aliquoting is necessary for mutiple use. Avoid repeated freeze-thaw cycles.
Reconstitution	We recommend that this vial be briefly centrifuged prior to opening to bring the contents to the bottom. Please reconstitute protein in deionized sterile water to a concentration of 0.1-1.0 mg/mL. We recommend to add 5-50% of glycerol (final concentration) and aliquot for long-term storage at -20°C/-80°C.

 Tel: 1-631-559-9269 1-516-512-3133

 Email: info@creative-biomart.com  Fax: 1-631-938-8127

 45-1 Ramsey Road, Shirley, NY 11967, USA



AA Sequence

SKWPEPVFGRLVSLGFPEKYGNHQDRSWTLTAPPGFRLRLYFTHFNLELSYRCEYD
FVKLTSGTKVLATLCGQESTDTERAPGNDFYSLGPSLKVTFHSDYSNEKPFTGFEA
FYAAEDVDECRTSLGDSVPCDHYCHNYLGGYYCSCRVGILHQNKHTCSALCSGQ
VFTGRSGFLSSPEYPQPYPKLSSCAYNIRLEEGFSITLDFVESFDVEMHPEAQCPYD
SLKIQTDKREYGPFCGKTLPPRIETDSNKVTITFTTDESGNHTGWKIHYTSTAQPCPD
PTAPPNGHISPVQATYVLKDSFSVFCKTGFELLQGSVPLKSFTAVCQKDGSDWRPIP
ECSIIDCGPPDDLPNGHVDYITGPEVTTYKAVIQYSCEETFYTMSSNGKYVCEADGF
WTSSKGEKSLPVCKPVCGLSTHTSGGRIIGGQPAKPGDFPWQVLLLGETTAAGALIH
DDWVLTAHAVYGKTEAMSSLDIRMGILKRLSLIYTQAWPEAVFIHEGYTHGAGFDN
DIALIKLNKVTINRNIMPICLPRKEAASLMKTDVGTVAGWGLTQKGF LARNLMFVDI
PIVDHQKCATAYTKQPYPGAKVTVNMLCAGLDRGGKDCRGGDSSGGALVFLDNETQ
RWFVGGIVSWGSIKCGGSEQYGVYTKVTNYIPWIENIINNF

GENE INFORMATION

Gene Name [Masp2 mannan-binding lectin serine peptidase 2 \[Rattus norvegicus \]](#)

Official Symbol [Masp2](#)

Synonyms MASP2; mannan-binding lectin serine peptidase 2; mannan-binding lectin serine protease 2; MBL-associated serine protease 2; mannose binding lectin-associated serine protease-2; mannose-binding protein-associated serine protease 2; MAp19; MASP-2;

Gene ID [64459](#)

mRNA Refseq [NM_172043](#)

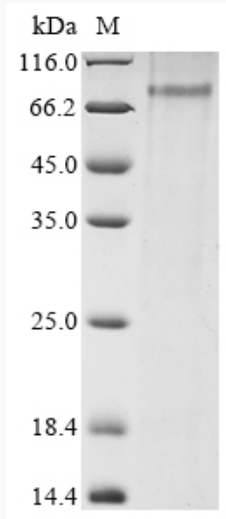
Protein Refseq [NP_742040](#)

Tel: 1-631-559-9269 1-516-512-3133

Email: info@creative-biomart.com Fax: 1-631-938-8127

45-1 Ramsey Road, Shirley, NY 11967, USA

SDS-PAGE



 Tel: 1-631-559-9269 1-516-512-3133

 Email: info@creative-biomart.com  Fax: 1-631-938-8127

 45-1 Ramsey Road, Shirley, NY 11967, USA