

Recombinant Rat Masp2 protein, His-tagged, Biotinylated, Primary Amine Labeling

Cat. No. Masp2-7855R Lot. No. (See product label)

SPECIFICATION

Product Overview	Primary Amine Labeling Biotinylated Recombinant Rat Masp2 protein(A2VCV7)(Thr287-Phe685), fused with C-terminal His tag, was expressed in E.coli.
Species	Rat
Source	E.coli
ProteinLength	Thr287-Phe685
Tag	C-His
Conjugation/Label	Biotin; Primary Amine Labeling
Form	Supplied as 0.22µm filtered solution in 50mM Tris, 200mM NaCl (pH 9.0).
Bio-activity	Immobilized Anti-MASP2 Antibody, hFc Tag at 0.5ug/ml (100ul/well) on the plate. Dose response curve for Biotinylated Rat MASP2, His Tag with the EC50 of 19.3ng/ml determined by ELISA.
Molecular Mass	The protein has a predicted MW of 46.7 kDa. Due to autocatalytic cleavage, the protein migrates to 15-20 kDa&25-30 kDa based on Tris-Bis PAGE result.
Endotoxin	Less than 1EU per µg by the LAL method.

 Tel: 1-631-559-9269 1-516-512-3133

 Email: info@creative-biomart.com  Fax: 1-631-938-8127

 45-1 Ramsey Road, Shirley, NY 11967, USA

Purity	> 95% as determined by Tris-Bis PAGE
Storage	Valid for 12 months from date of receipt when stored at -80°C. Recommend to aliquot the protein into smaller quantities for optimal storage. Please do not repeated freeze-thaw cycles.
Reconstitution	It is recommended that sterile water be added to the vial to prepare a stock solution of 0.2 ug/ul. Centrifuge the vial at 4°C before opening to recover the entire contents.
Conjugation	Biotin

GENE INFORMATION

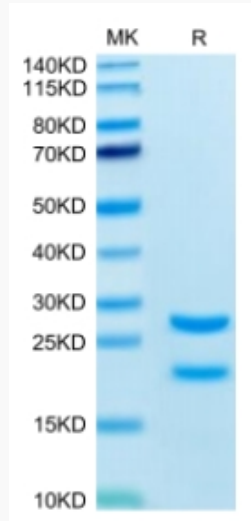
Gene Name	Masp2 mannan-binding lectin serine peptidase 2 [Rattus norvegicus]
Official Symbol	Masp2
Synonyms	MASP2; mannan-binding lectin serine peptidase 2; mannan-binding lectin serine protease 2; MBL-associated serine protease 2; mannose binding lectin-associated serine protease-2; mannose-binding protein-associated serine protease 2; MAp19; MASP-2;
Gene ID	64459
mRNA Refseq	NM_172043
Protein Refseq	NP_742040

 Tel: 1-631-559-9269 1-516-512-3133

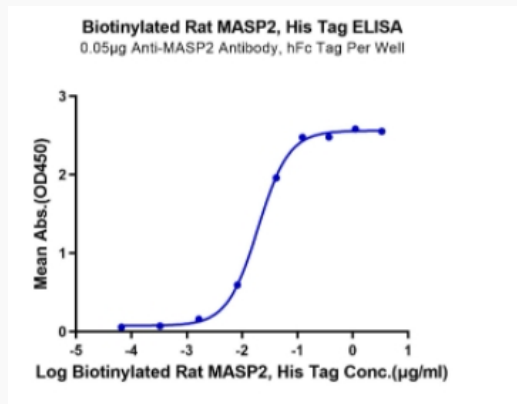
 Email: info@creative-biomart.com  Fax: 1-631-938-8127

 45-1 Ramsey Road, Shirley, NY 11967, USA

Tris-Bis PAGE



ELISA Data



 Tel: 1-631-559-9269 1-516-512-3133

 Email: info@creative-biomart.com  Fax: 1-631-938-8127

 45-1 Ramsey Road, Shirley, NY 11967, USA