

Recombinant Mouse Mbl2 Protein (Glu19-Asp244)

Cat. No. Mbl2-6752M Lot. No. (See product label)

SPECIFICATION

Product Overview	Recombinant mouse Mbl2 (Glu19-Asp244) without tag was expressed in mammalian cells.
Species	Mouse
Source	Mammalian Cells
ProteinLength	Glu19-Asp244
Description	Predicted to enable several functions, including calcium-dependent protein binding activity; identical protein binding activity; and mannose binding activity. Acts upstream of or within defense response to other organism and positive regulation of phagocytosis. Located in extracellular space. Is expressed in embryo. Human ortholog (s) of this gene implicated in several diseases, including autoimmune disease (multiple); bacterial infectious disease (multiple); fungal infectious disease (multiple); liver disease (multiple); and lung disease (multiple). Orthologous to human MBL2 (mannose binding lectin 2).
Form	Lyophilized powder/frozen liquid
Molecular Mass	24.86 kDa
Purity	> 90 % as determined by SDS-PAGE
Notes	For research use only.

 Tel: 1-631-559-9269 1-516-512-3133

 Email: info@creative-biomart.com  Fax: 1-631-938-8127

 45-1 Ramsey Road, Shirley, NY 11967, USA

Storage	Use a manual defrost freezer and avoid repeated freeze thaw cycles. Store at 2 to 8 centigrade for one week. Store at -20 to -80 centigrade for twelve months from the date of receipt.
Storage Buffer	Supplied as solution form in PBS or lyophilized from PBS.
Reconstitution	Reconstitute in sterile water for a stock solution.
Shipping	They are shipped out with dry ice/blue ice unless customers require otherwise.

GENE INFORMATION

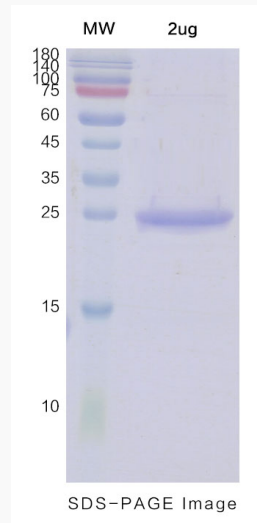
Gene Name	Mbl2 mannose-binding lectin (protein C) 2 [Mus musculus (house mouse)]
Official Symbol	Mbl2
Synonyms	Mbl2; mannose-binding lectin (protein C) 2; MBL; L-MBP; MBL-C; MBP-C; RARF/P28A; mannose-binding protein C; RA-reactive factor P28A subunit; mannan-binding protein; mannose binding lectin, liver (C)
Gene ID	17195
mRNA Refseq	NM_010776
Protein Refseq	NP_034906
UniProt ID	P41317

 Tel: 1-631-559-9269 1-516-512-3133

 Email: info@creative-biomart.com  Fax: 1-631-938-8127

 45-1 Ramsey Road, Shirley, NY 11967, USA

SDS-PAGE



 Tel: 1-631-559-9269 1-516-512-3133

 Email: info@creative-biomart.com  Fax: 1-631-938-8127

 45-1 Ramsey Road, Shirley, NY 11967, USA