

## Recombinant Rat Mbl2 protein, His-tagged

Cat. No. Mbl2-7021R Lot. No. (See product label)

### SPECIFICATION

<b>Product Overview</b>	Recombinant Rat Mbl2 aa. (Glu19~Asp244) fused with N-terminal His tag was produced in E. coli cells.
<b>Species</b>	Rat
<b>Source</b>	E.coli
<b>ProteinLength</b>	Glu19~Asp244
<b>Description</b>	A lectin that binds mannose and N-acetylglucosamine.
<b>Form</b>	Freeze-dried powder
<b>Molecular Mass</b>	30kDa as determined by SDS-PAGE reducing conditions.
<b>Endotoxin</b>	<1.0EU per 1ug (determined by the LAL method)
<b>Purity</b>	>95%
<b>Characteristic</b>	The isoelectric point is 6.0.
<b>Applications</b>	SDS-PAGE; WB; ELISA; IP; CoIP; Purification; Amine Reactive Labeling
<b>Stability</b>	The thermal stability is described by the loss rate. The loss rate was determined by accelerated thermal degradation test, that is, incubate the protein at 37°C for 48h,

 Tel: 1-631-559-9269 1-516-512-3133

 Email: [info@creative-biomart.com](mailto:info@creative-biomart.com)  Fax: 1-631-938-8127

 45-1 Ramsey Road, Shirley, NY 11967, USA

and no obvious degradation and precipitation were observed. The loss rate is less than 5% within the expiration date under appropriate storage condition.

**Storage**

Avoid repeated freeze/thaw cycles. Store at 2-8°C for one month. Aliquot and store at -80°C for 12 months.

**Concentration**

200ug/mL

**Storage buffer**

PBS, pH7.4, containing 1mM DTT, 5% trehalose, 0.01% sarcosyl and Proclin300.

**Reconstitution**

Reconstitute in PBS (pH7.4) to a concentration of 0.1-1.0 mg/mL. Do not vortex.

## GENE INFORMATION

**Gene Name**

Mbl2 mannose-binding lectin (protein C) 2 [ *Rattus norvegicus* (Norway rat) ]

**Official Symbol**

Mbl2

**Synonyms**

Mbl2; mannose-binding lectin (protein C) 2; Ab2-001; Ab2-011; mannose-binding protein C; MBP-C; RA-reactive factor P28A subunit; RARF/P28A; mannan-binding protein; mannose binding lectin 2 (protein C); mannose-binding protein C (liver); ra-reactive factor polysaccharide-binding component p28A; raRF p28A

**Gene ID**

64668

**mRNA Refseq**

NM\_022704.2

**Protein Refseq**

NP\_073195.2

**UniProt ID**

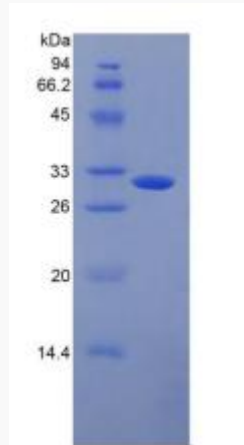
P08661

 Tel: 1-631-559-9269 1-516-512-3133

 Email: [info@creative-biomart.com](mailto:info@creative-biomart.com)  Fax: 1-631-938-8127

 45-1 Ramsey Road, Shirley, NY 11967, USA

**SDS-PAGE**



 Tel: 1-631-559-9269 1-516-512-3133

 Email: [info@creative-biomart.com](mailto:info@creative-biomart.com)  Fax: 1-631-938-8127

 45-1 Ramsey Road, Shirley, NY 11967, USA