

Recombinant Rat Mbl2 protein, His & GST-tagged

Cat. No. Mbl2-7022R Lot. No. (See product label)

SPECIFICATION

Product Overview	Recombinant Rat Mbl2 aa. (Glu19~Asp244 (Accession # P08661)) fused with N-terminal His & GST tag was produced in E. coli cells.
Species	Rat
Source	E.coli
ProteinLength	Glu19~Asp244
Description	A lectin that binds mannose and N-acetylglucosamine.
Form	Freeze-dried powder
Molecular Mass	Predicted Molecular Mass: 55.7kDa
Endotoxin	<1.0EU per 1ug (determined by the LAL method)
Purity	>95%
Characteristic	The isoelectric point is 6.0.
Applications	SDS-PAGE; WB; ELISA; IP
Stability	The thermal stability is described by the loss rate. The loss rate was determined by accelerated thermal degradation test, that is, incubate the protein at 37°C for 48h,

 Tel: 1-631-559-9269 1-516-512-3133

 Email: info@creative-biomart.com  Fax: 1-631-938-8127

 45-1 Ramsey Road, Shirley, NY 11967, USA

and no obvious degradation and precipitation were observed. The loss rate is less than 5% within the expiration date under appropriate storage condition.

Storage

Avoid repeated freeze/thaw cycles. Store at 2-8°C for one month. Aliquot and store at -80°C for 12 months.

Storage buffer

Supplied as lyophilized form in PBS, pH7.4, containing 5% sucrose, 0.01% sarcosyl.

Reconstitution

Reconstitute in sterile PBS, pH7.2-pH7.4.

GENE INFORMATION

Gene Name

Mbl2 mannose-binding lectin (protein C) 2 [Rattus norvegicus (Norway rat)]

Official Symbol

Mbl2

Synonyms

Mbl2; mannose-binding lectin (protein C) 2; Ab2-001; Ab2-011; mannose-binding protein C; MBP-C; RA-reactive factor P28A subunit; RARF/P28A; mannan-binding protein; mannose binding lectin 2 (protein C); mannose-binding protein C (liver); ra-reactive factor polysaccharide-binding component p28A; raRF p28A

Gene ID

64668

mRNA Refseq

NM_022704.2

Protein Refseq

NP_073195.2

UniProt ID

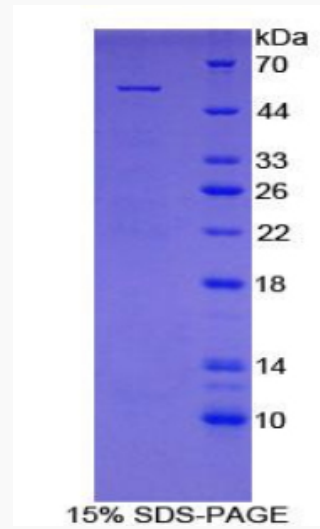
P08661

 Tel: 1-631-559-9269 1-516-512-3133

 Email: info@creative-biomart.com  Fax: 1-631-938-8127

 45-1 Ramsey Road, Shirley, NY 11967, USA

SDS-PAGE



 Tel: 1-631-559-9269 1-516-512-3133

 Email: info@creative-biomart.com  Fax: 1-631-938-8127

 45-1 Ramsey Road, Shirley, NY 11967, USA