

## Recombinant Mouse Mbp protein, His-tagged

Cat. No. Mbp-644M Lot. No. (See product label)

### SPECIFICATION

<b>Product Overview</b>	Recombinant Mouse Mbp protein(P04370)(1-250aa), fused with N-terminal His tag, was expressed in Yeast.
<b>Species</b>	Mouse
<b>Source</b>	Yeast
<b>ProteinLength</b>	1-250aa
<b>Tag</b>	N-His
<b>Form</b>	If the delivery form is liquid, the default storage buffer is Tris/PBS-based buffer, 5%-50% glycerol. If the delivery form is lyophilized powder, the buffer before lyophilization is Tris/PBS-based buffer, 6% Trehalose, pH 8.0.
<b>Molecular Mass</b>	29.2 kDa
<b>Purity</b>	Greater than 85% as determined by SDS-PAGE.
<b>Storage</b>	Store at -20°C/-80°C upon receipt, aliquoting is necessary for mutiple use. Avoid repeated freeze-thaw cycles.
<b>Reconstitution</b>	We recommend that this vial be briefly centrifuged prior to opening to bring the contents to the bottom. Please reconstitute protein in deionized sterile water to a concentration of 0.1-1.0 mg/mL. We recommend to add 5-50% of glycerol (final

 Tel: 1-631-559-9269 1-516-512-3133

 Email: [info@creative-biomart.com](mailto:info@creative-biomart.com)  Fax: 1-631-938-8127

 45-1 Ramsey Road, Shirley, NY 11967, USA

concentration) and aliquot for long-term storage at -20°C/-80°C.

**AA Sequence**

MGNHSGKRELSAEKASKDGEIHRGEAGKKRSVGKLSQTASESDSDFGEADAIQNN  
 GTS AEDTAVTDSKHTADPKNNWQGAHPADPGNRPHLIRLFSRDAPGREDNTFKDR  
 PSEDELQTIQEDPTAASGGLDVMASQKRPSQRSKYLATASTMDHARHGFLPRHR  
 DTGILDSIGRFFSGDRGAPKRGSKGDSHTRTTHYGSLPQKSQHGRTQDENPVVHFF  
 KNIVTPRTPPPSQGKGGDRDSRSGSPMARR

## GENE INFORMATION

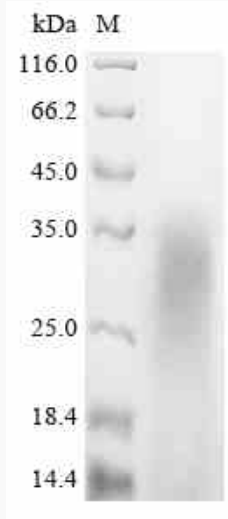
<b>Gene Name</b>	Mbp myelin basic protein [ <i>Mus musculus</i> ]
<b>Official Symbol</b>	Mbp
<b>Synonyms</b>	MBP; myelin basic protein; Golli-Mbp; myelin basic protein; shiverer; myelin deficient; myelin A1 protein; mld; shi; Hmbpr; C76307; R75289; golli-mbp;
<b>Gene ID</b>	17196
<b>mRNA Refseq</b>	NM_001025245
<b>Protein Refseq</b>	NP_001020416

 Tel: 1-631-559-9269 1-516-512-3133

 Email: [info@creative-biomart.com](mailto:info@creative-biomart.com)  Fax: 1-631-938-8127

 45-1 Ramsey Road, Shirley, NY 11967, USA

**SDS-PAGE**



 Tel: 1-631-559-9269 1-516-512-3133

 Email: [info@creative-biomart.com](mailto:info@creative-biomart.com)  Fax: 1-631-938-8127

 45-1 Ramsey Road, Shirley, NY 11967, USA