

Recombinant Rat Mcam protein, His & T7-tagged

Cat. No. Mcam-1784R Lot. No. (See product label)

SPECIFICATION

Product Overview	Recombinant Rat Mcam aa. (Gln323~Lys560 (Accession # Q9EPF2)) fused with N-terminal His & T7 tag was produced in E. coli cells.
Species	Rat
Source	E.coli
ProteinLength	Gln323~Lys560
Description	May act as a cell adhesion molecule; may play a role in tumor growth and invasion.
Form	Freeze-dried powder
Molecular Mass	34kDa as determined by SDS-PAGE reducing conditions.
Endotoxin	<1.0EU per 1ug (determined by the LAL method)
Purity	>95%
Characteristic	The isoelectric point is 4.9.
Applications	SDS-PAGE; WB; ELISA; IP.
Stability	The thermal stability is described by the loss rate of the target protein. The loss rate was determined by accelerated thermal degradation test, that is, incubate the protein

 Tel: 1-631-559-9269 1-516-512-3133

 Email: info@creative-biomart.com  Fax: 1-631-938-8127

 45-1 Ramsey Road, Shirley, NY 11967, USA

at 37°C for 48h, and no obvious degradation and precipitation were observed. (Referring from China Biological Products Standard, which was calculated by the Arrhenius equation.) The loss of this protein is less than 5% within the expiration date under appropriate storage condition.

Storage	Avoid repeated freeze/thaw cycles. Store at 2-8°C for one month. Aliquot and store at -80°C for 12 months.
Storage buffer	Supplied as lyophilized form in PBS, pH7.4, containing 5% trehalose, 0.01% sarcosyl.
Reconstitution	Reconstitute in sterile PBS, pH7.2-pH7.4.

GENE INFORMATION

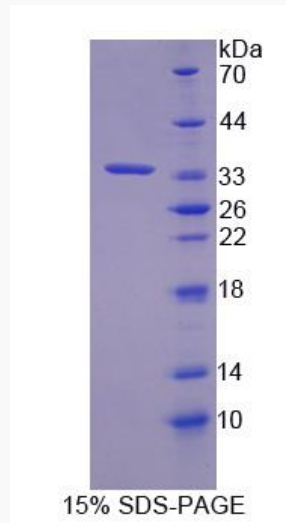
Gene Name	Mcam melanoma cell adhesion molecule [<i>Rattus norvegicus</i> (Norway rat)]
Official Symbol	Mcam
Synonyms	Mcam; melanoma cell adhesion molecule; CD146; Muc18; cell surface glycoprotein MUC18; gicerin; I-gicerin; melanoma-associated antigen MUC18
Gene ID	78967
mRNA Refseq	NM_001034009.1
Protein Refseq	NP_001029181.1
UniProt ID	Q9EPF2

 Tel: 1-631-559-9269 1-516-512-3133

 Email: info@creative-biomart.com  Fax: 1-631-938-8127

 45-1 Ramsey Road, Shirley, NY 11967, USA

SDS-PAGE



 Tel: 1-631-559-9269 1-516-512-3133

 Email: info@creative-biomart.com  Fax: 1-631-938-8127

 45-1 Ramsey Road, Shirley, NY 11967, USA