

## Recombinant Mouse Mccc1 protein, His & T7-tagged

Cat. No. Mccc1-8173M Lot. No. (See product label)

### SPECIFICATION

|                         |   |
|-------------------------|---|
| <b>Product Overview</b> | Recombinant Mouse Mccc1 aa. (Phe484~Lys717 (Accession # Q99MR8)) fused with N-terminal His & T7 tag was produced in E. coli cells.  |
| <b>Species</b>          | Mouse   |
| <b>Source</b>           | E.coli  |
| <b>ProteinLength</b>    | Phe484~Lys717   |
| <b>Form</b>             | Freeze-dried powder   |
| <b>Molecular Mass</b>   | Predicted Molecular Mass: 29.5kDa.  |
| <b>Endotoxin</b>        | <1.0EU per 1ug (determined by the LAL method)   |
| <b>Purity</b>           | >90%  |
| <b>Characteristic</b>   | The isoelectric point is 8.5.   |
| <b>Applications</b>     | SDS-PAGE; WB; ELISA; IP.  |
| <b>Stability</b>        | The thermal stability is described by the loss rate of the target protein. The loss rate was determined by accelerated thermal degradation test, that is, incubate the protein at 37°C for 48h, and no obvious degradation and precipitation were observed. (Referring from China Biological Products Standard, which was calculated by the |

 Tel: 1-631-559-9269 1-516-512-3133

 Email: [info@creative-biomart.com](mailto:info@creative-biomart.com)  Fax: 1-631-938-8127

 45-1 Ramsey Road, Shirley, NY 11967, USA

Arrhenius equation.) The loss of this protein is less than 5% within the expiration date under appropriate storage condition.

**Storage**

Avoid repeated freeze/thaw cycles. Store at 2-8°C for one month. Aliquot and store at -80°C for 12 months.

**Storage Buffer**

Supplied as lyophilized form in 20mM Tris, 150mM NaCl, pH8.0, containing 1mM EDTA, 1mM DTT, 0.01% sarcosyl, 5% trehalose, and preservative.

**Reconstitution**

Reconstitute in sterile ddH<sub>2</sub>O.

## GENE INFORMATION

**Gene Name**

[Mccc1 methylcrotonoyl-Coenzyme A carboxylase 1 \(alpha\) \[ Mus musculus \(house mouse\) \]](#)

**Official Symbol**

[Mccc1](#)

**Gene ID**

[72039](#)

**mRNA Refseq**

[NM\\_023644.4](#)

**Protein Refseq**

[NP\\_076133.3](#)

**UniProt ID**

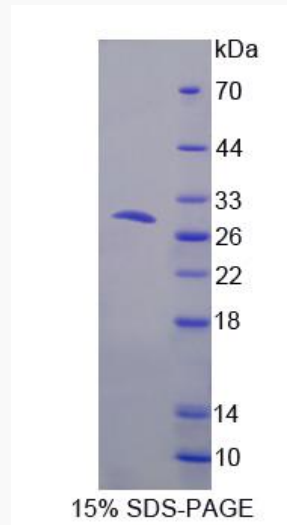
[Q99MR8](#)

 Tel: 1-631-559-9269 1-516-512-3133

 Email: [info@creative-biomart.com](mailto:info@creative-biomart.com)  Fax: 1-631-938-8127

 45-1 Ramsey Road, Shirley, NY 11967, USA

**SDS-PAGE**



 Tel: 1-631-559-9269 1-516-512-3133

 Email: [info@creative-biomart.com](mailto:info@creative-biomart.com)  Fax: 1-631-938-8127

 45-1 Ramsey Road, Shirley, NY 11967, USA