

## Recombinant Mouse Mcl1 protein, His-tagged

Cat. No. Mcl1-185M Lot. No. (See product label)

### SPECIFICATION

<b>Product Overview</b>	Recombinant Mouse Mcl1(Phe2~Gly307) fused with His tag at N-terminal was expressed in E. coli.
<b>Species</b>	Mouse
<b>Source</b>	E.coli
<b>ProteinLength</b>	Phe2~Gly307
<b>Description</b>	Mcl1 played an important role in many functions.
<b>Form</b>	PBS, pH7.4, containing 0.01% SKL, 1mM DTT, 5% Trehalose and Proclin300
<b>Molecular Mass</b>	36.6kDa
<b>Endotoxin</b>	<1.0EU per 1g (determined by the LAL method)
<b>Purity</b>	> 95%
<b>Applications</b>	SDS-PAGE; WB; ELISA; IP
<b>Stability</b>	The thermal stability is described by the loss rate. The loss rate was determined by accelerated thermal degradation test, that is, incubate the protein at 37 centigrade for 48h, and no obvious degradation and precipitation were observed. The loss rate is less than 5% within the expiration date under appropriate storage condition.

 Tel: 1-631-559-9269 1-516-512-3133

 Email: [info@creative-biomart.com](mailto:info@creative-biomart.com)  Fax: 1-631-938-8127

 45-1 Ramsey Road, Shirley, NY 11967, USA

**Storage** Avoid repeated freeze/thaw cycles. Store at 2-8 centigrade for one month. Aliquot and store at -80 centigrade for 12 months.

**Reconstitution** Reconstitute in PBS or others.

## GENE INFORMATION

**Gene Name** Mcl1 myeloid cell leukemia sequence 1 [ *Mus musculus* ]

**Official Symbol** Mcl1

**Synonyms** MCL1; myeloid cell leukemia sequence 1; induced myeloid leukemia cell differentiation protein Mcl-1 homolog; bcl-2-related protein EAT/mcl1; Mcl-1; AW556805;

**Gene ID** 17210

**mRNA Refseq** NM\_008562

**Protein Refseq** NP\_032588

**UniProt ID** P97287

**Chromosome Location** 3 F2.1; 3 40.74 cM

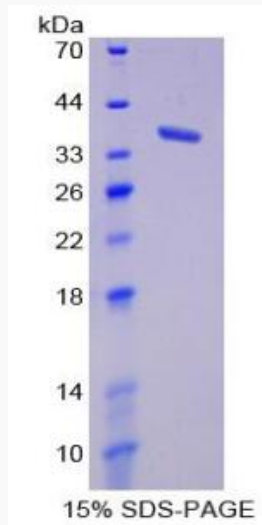
**Pathway** Apoptosis, organism-specific biosystem; IL-7 Signaling Pathway, organism-specific biosystem;

**Function** BH domain binding; BH3 domain binding; BH3 domain binding; protein binding; protein dimerization activity; protein heterodimerization activity;

 Tel: 1-631-559-9269 1-516-512-3133

 Email: [info@creative-biomart.com](mailto:info@creative-biomart.com)  Fax: 1-631-938-8127

 45-1 Ramsey Road, Shirley, NY 11967, USA



Tel: 1-631-559-9269 1-516-512-3133

Email: [info@creative-biomart.com](mailto:info@creative-biomart.com) Fax: 1-631-938-8127

45-1 Ramsey Road, Shirley, NY 11967, USA