

Active Recombinant Rat Mdk protein

Cat. No. Mdk-92R Lot. No. (See product label)

SPECIFICATION

Product Overview	Active Recombinant Rat Mdk protein(Q9R1S9)(21-140 aa) was expressed in E.coli.
Species	Rat
Source	E.coli
ProteinLength	21-140 aa
Form	Lyophilized from a 0.2 µm filtered concentrated solution in PBS, pH7.4.
Bio-activity	Fully biologically active when compared to standard. The biological activity determined by a chemotaxis bioassay using human neutrophils is in a concentration range of 10-100 ng/ml.
Molecular Mass	Approximately 13.2 kDa, a single non-glycosylated polypeptide chain containing 120 amino acids.
AASequence	VAKKKDKVKK GSECSEWTWG PCTPSSKDCG MGFREGTCGA QTQRIHCKVP CNWKKKEFGAD CKYKFESWGA CDGSTGTKAR QGTLKKARYN AQCQETIRVT KPCTSKTKSK AKAKKGKGD
Endotoxin	Less than 0.1 EU/µg of rRtMidkine as determined by LAL method.
Purity	>97% by SDS-PAGE and HPLC analyses.

 Tel: 1-631-559-9269 1-516-512-3133

 Email: info@creative-biomart.com  Fax: 1-631-938-8127

 45-1 Ramsey Road, Shirley, NY 11967, USA

Storage

Use a manual defrost freezer and avoid repeated freeze-thaw cycles. - 12 months from date of receipt, -20 to -70 °C as supplied. - 1 month, 2 to 8 °C under sterile conditions after reconstitution. - 3 months, -20 to -70 °C under sterile conditions after reconstitution.

Reconstitution

We recommend that this vial be briefly centrifuged prior to opening to bring the contents to the bottom. Reconstitute in sterile distilled water or aqueous buffer containing 0.1 % BSA to a concentration of 0.1-1.0 mg/mL. Stock solutions should be apportioned into working aliquots and stored at ≤ -20 °C. Further dilutions should be made in appropriate buffered solutions.

GENE INFORMATION

Gene Name Mdk midkine [*Rattus norvegicus*]

Official Symbol Mdk

Synonyms MDK; midkine; MK;

Gene ID 81517

mRNA Refseq NM_030859

Protein Refseq NP_110486

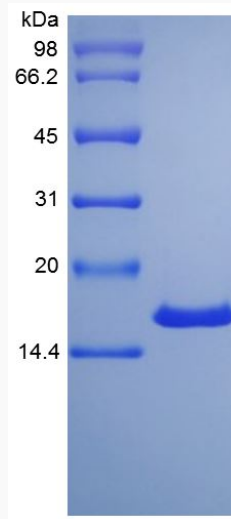
 Tel: 1-631-559-9269 1-516-512-3133

 Email: info@creative-biomart.com  Fax: 1-631-938-8127

 45-1 Ramsey Road, Shirley, NY 11967, USA



SDS-PAGE



Tel: 1-631-559-9269 1-516-512-3133

Email: info@creative-biomart.com Fax: 1-631-938-8127

45-1 Ramsey Road, Shirley, NY 11967, USA