

Recombinant Mouse Mdm2 Protein, His-tagged

Cat. No. Mdm2-1771M **Lot. No.** (See product label)

SPECIFICATION

Product Overview	Recombinant Mouse Mdm2 Protein (Met1-Asn310) with N-His tag was expressed in E. coli.
Species	Mouse
Source	E.coli
ProteinLength	Met1-Asn310
Description	Enables p53 binding activity and ubiquitin protein ligase activity. Involved in apoptotic process and positive regulation of muscle cell differentiation. Acts upstream of or within several processes, including blood vessel remodeling; circulatory system development; and traversing start control point of mitotic cell cycle. Located in cytoplasm and nucleolus. Is expressed in several structures, including alimentary system; embryo ectoderm; genitourinary system; respiratory system; and sensory organ. Human ortholog(s) of this gene implicated in chronic myeloid leukemia; endocrine gland cancer (multiple); glioblastoma; ichthyosis; and sarcoma. Orthologous to human MDM2 (MDM2 proto-oncogene).
Form	Freeze-dried powder
Molecular Mass	Predicted Molecular Mass: 38.2 kDa
Purity	> 97%

 Tel: 1-631-559-9269 1-516-512-3133

 Email: info@creative-biomart.com  Fax: 1-631-938-8127

 45-1 Ramsey Road, Shirley, NY 11967, USA

Applications	Positive Control; Immunogen; SDS-PAGE; WB.
Stability	The thermal stability is described by the loss rate. The loss rate was determined by accelerated thermal degradation test, that is, incubate the protein at 37 centigrade for 48h, and no obvious degradation and precipitation were observed. The loss rate is less than 5% within the expiration date under appropriate storage condition.
Storage	Avoid repeated freeze/thaw cycles. Store at 2-8 centigrade for one month. Aliquot and store at -80 centigrade for 12 months.
Storage Buffer	PBS, pH7.4, containing 0.01% SKL, 1mM DTT, 5% Trehalose and Proclin300.
Reconstitution	Reconstitute in 20mM Tris, 150mM NaCl (pH8.0) to a concentration of 0.1-1.0 mg/mL. Do not vortex.

GENE INFORMATION

Gene Name	Mdm2 transformed mouse 3T3 cell double minute 2 [<i>Mus musculus</i> (house mouse)]
Official Symbol	Mdm2
Synonyms	MDM2; transformed mouse 3T3 cell double minute 2; E3 ubiquitin-protein ligase Mdm2; oncoprotein Mdm2; double minute 2 protein; p53-binding protein Mdm2; Mdm-2; AA415488; 1700007J15Rik;
Gene ID	17246
mRNA Refseq	NM_010786
Protein Refseq	NP_034916

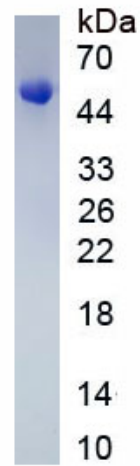
 Tel: 1-631-559-9269 1-516-512-3133

 Email: info@creative-biomart.com  Fax: 1-631-938-8127

 45-1 Ramsey Road, Shirley, NY 11967, USA

UniProt ID

P23804



 Tel: 1-631-559-9269 1-516-512-3133

 Email: info@creative-biomart.com  Fax: 1-631-938-8127

 45-1 Ramsey Road, Shirley, NY 11967, USA