

Recombinant Mouse Mep1a Protein, His-tagged

Cat. No. Mep1a-149M **Lot. No.** (See product label)

SPECIFICATION

Product Overview	Recombinant Mouse Mep1a(Asn219~Gly463) fused with His tag at N-terminal was expressed in E. coli.
Species	Mouse
Source	E.coli
ProteinLength	Asn219~Gly463
Description	Mep1a played an important role in many functions.
Form	PBS, pH7.4, containing 0.01% SKL, 1mM DTT, 5% Trehalose and Proclin300.
Molecular Mass	31.4kDa
Identity	Reconstitute in PBS or others
Endotoxin	<1.0EU per 1g (determined by the LAL method)
Purity	> 95%
Applications	Positive Control; Immunogen; SDS-PAGE; WB. If bio-activity of the protein is needed, please check active protein
Stability	The thermal stability is described by the loss rate. The loss rate was determined by

 Tel: 1-631-559-9269 1-516-512-3133

 Email: info@creative-biomart.com  Fax: 1-631-938-8127

 45-1 Ramsey Road, Shirley, NY 11967, USA

accelerated thermal degradation test, that is, incubate the protein at 37 centigrade for 48h, and no obvious degradation and precipitation were observed. The loss rate is less than 5% within the expiration date under appropriate storage condition.

Storage

Avoid repeated freeze/thaw cycles. Store at 2-8 centigrade for one month. Aliquot and store at -80 centigrade for 12 months.

Reconstitution

Reconstitute in PBS or others

GENE INFORMATION

Gene Name

[Mep1a meprin 1 alpha \[Mus musculus \]](#)

Official Symbol

[Mep1a](#)

Synonyms

MEP1A; meprin 1 alpha; meprin A subunit alpha; meprin alpha; endopeptidase-2; meprin A alpha-subunit; Mep1; Mep-1; Mep-1a; AI098089; AW107200;

Gene ID

[17287](#)

mRNA Refseq

[NM_008585](#)

Protein Refseq

[NP_032611](#)

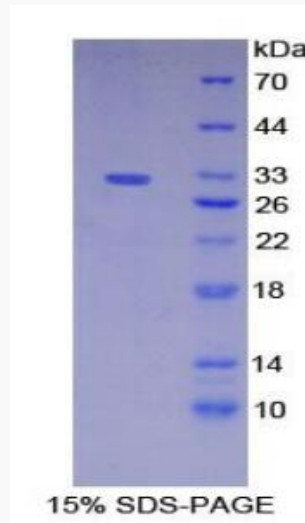
UniProt ID

[P28825](#)

 Tel: 1-631-559-9269 1-516-512-3133

 Email: info@creative-biomart.com  Fax: 1-631-938-8127

 45-1 Ramsey Road, Shirley, NY 11967, USA



Tel: 1-631-559-9269 1-516-512-3133

Email: info@creative-biomart.com Fax: 1-631-938-8127

45-1 Ramsey Road, Shirley, NY 11967, USA